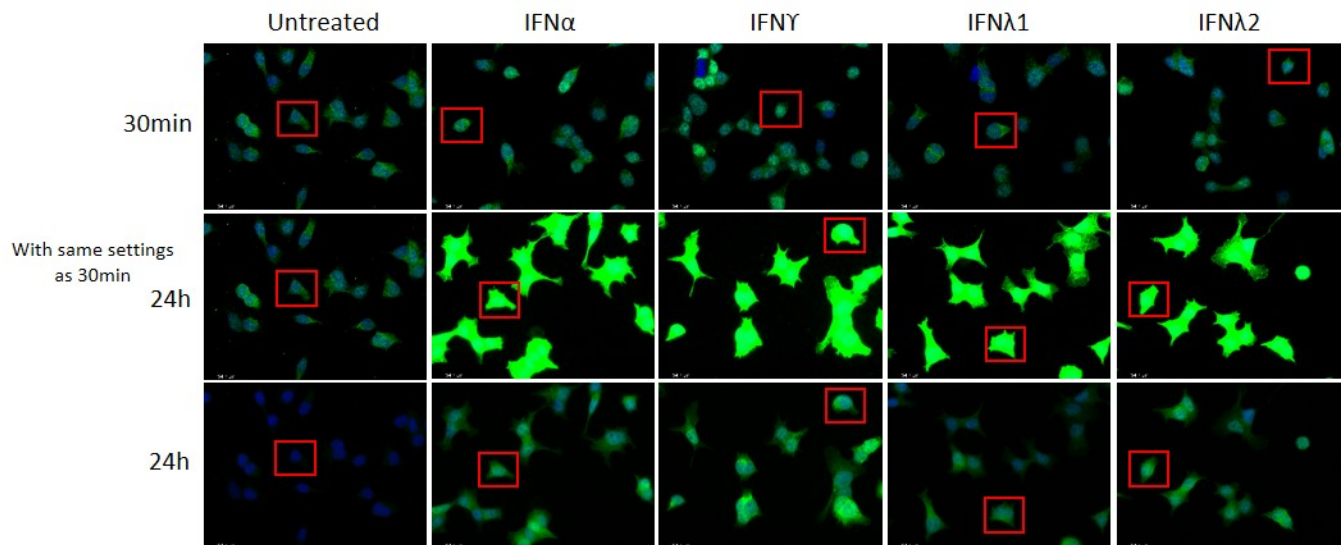
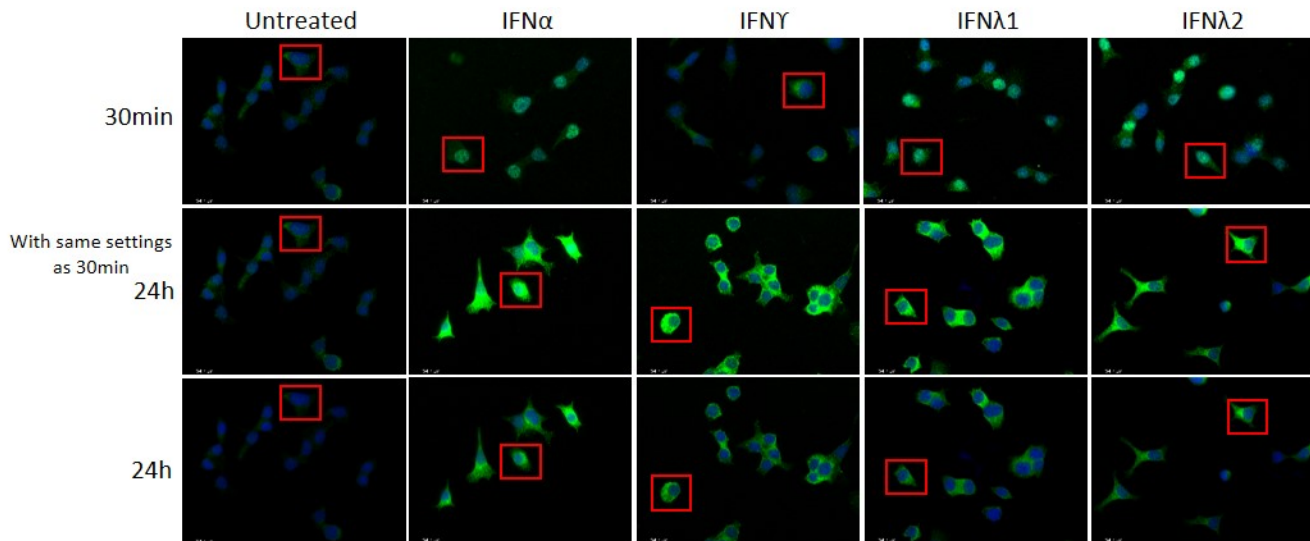


Supplementary – Fig 1

STAT1 Full Images



STAT2 Full Images



EndoC- β H1 were seeded at a density of 4×10^5 /ml and cultured for 24h. Thereafter, cells were treated with either 1000U/ml IFN α or 20ng/ml IFN γ or 200ng/ml IFN λ 1 or IFN λ 2 for 24h. At the end of treatment, cells were fixed with 4% paraformaldehyde. Fixed cells were then permeabilised and stained with anti STAT1 antibody. Images were taken using a Leica DM4000 B LED Fluorescence microscope. The gain and exposure were the same within time points but differed between 30min and 24h. Same image is used under untreated conditions to highlight the difference.