

Supplementary data – Fig. S1

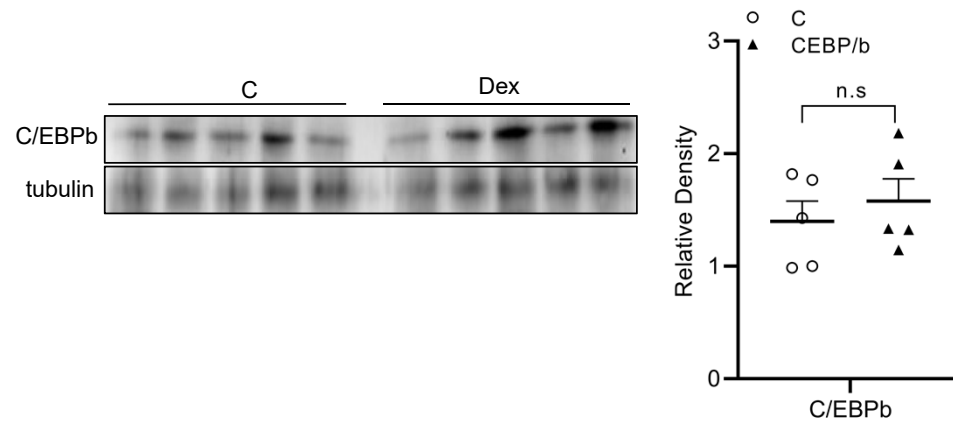


Figure S1. Expression of C/EBPb in the femur and tibia lysates of the control or Dex-treated mice (vehicle or 100  $\mu\text{g}/\text{g}/\text{day}$  Dex, i.p,  $n = 5$  in each group) was analyzed using western blotting and normalized against tubulin. n.s., not significant.