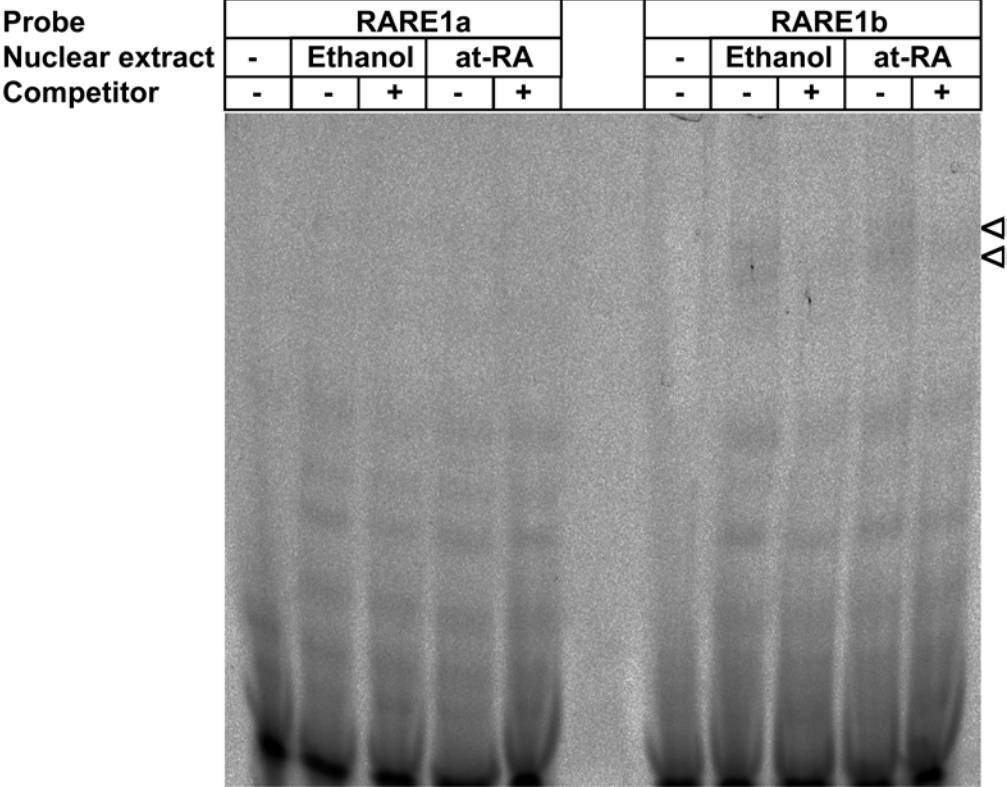


Supplementary figure 4



Supplementary Figure 4 Absence of retinoid-dependent complex formation on RARE1a and RARE1b in BAFs.

Electrophoretic mobility shift assays were performed with nuclear extracts (20 µg protein) from cells treated with at-RA or vehicle (ethanol). Extracts were incubated with Cy5-labelled probes for RARE1a (PI.4(-255/-235), 5'-GTA TGG TCA GCT TGG GGA AAT) or RARE1b (PI.4(-191/-169), 5'-AGA TGC ACA TTG AAT GAC CGA CA) in the absence or presence of a 100-fold molar excess of the unlabeled probe (Competitor). Two different preparations of cells gave nearly identical results. The fluorescence scan was slightly turned and mirrored to achieve vertical orientation of the image. Arrowheads indicate positions of weak specific DNA-protein complexes formed in the presence of RARE1b-oligonucleotide. Complex formation is not enhanced by at-RA-treatment of cells.