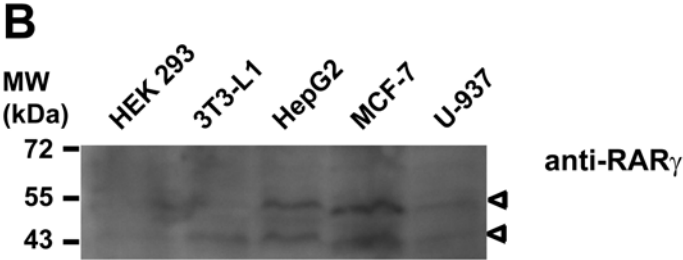
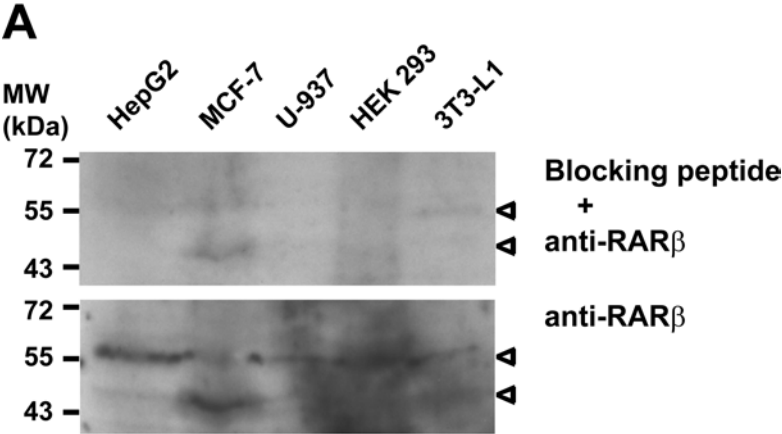


Supplementary figure 2



Supplementary Figure 2 Low level expression of RAR β and RAR γ in preadipocytes.

In order to verify the antibodies used for detection of RAR β and RAR γ various cell lines were compared. 20 μ g total protein lysates from 3T3-L1-, HEK 293-, HepG2-, MCF-7- and U-937-cells, respectively, were analyzed by western blotting. Deviating from the standard protocol, incubations with primary antibodies were overnight with a dilution of 1:200. Exposure times were 30 min in the blots shown. (A) RAR β -antibody was used for probing a membrane in the presence of a 100-fold molar excess of a blocking peptide (upper panel), stripped and re-probed with antibody alone (lower panel). In all cell lines expression of RAR β can be detected, albeit in 3T3-L1- and MCF-7-cells only staining of the smaller isoforms appears to be specific. Arrowheads depict the specific band with an apparent molecular weight of around 55 kDa and 45 kDa, respectively. (B) RAR γ -antibody detects two bands of around 53 kDa and 43 kDa, respectively, in all cell-lines tested (arrowheads). The signal in 3T3-L1-cells is markedly weaker than that in MCF-7-cells.