

REVIEW

The epidermal growth factor receptor in healthy pregnancy and preeclampsia

Luca Clemente¹ and Ian M Bird^{1,2}¹Perinatal Research Laboratories, Department of Obstetrics and Gynecology, University of Wisconsin, School of Medicine and Public Health, Madison, Wisconsin, USA²Department of Pediatrics, University of Wisconsin, School of Medicine and Public Health, Madison, Wisconsin, USACorrespondence should be addressed to I M Bird: imbird@wisc.edu

Abstract

The epidermal growth factor receptor (EGFR) is expressed robustly in the placenta, and critical processes of pregnancy such as placental growth and trophoblast fusion are dependent on EGFR function. However, the role that aberrant EGFR signaling might play in the etiology and/or maintenance of preeclampsia (PE) remains largely unexplored. Recently, we have shown that overexpression of EGFR in cultured uterine artery endothelial cells (UAEC), which express little endogenous EGFR, remaps responsiveness away from vascular endothelial growth factor receptor (VEGFR) signaling and toward EGFR, suggesting that endothelial EGFR expression may be kept low to preserve VEGFR control of angiogenesis. Here we will consider the evidence for the possibility that the endothelial dysfunction observed in PE might in some cases result from elevation of endothelial EGFR. During pregnancy, trophoblasts are known to synthesize large amounts of EGFR protein, and the placenta regularly releases syncytiotrophoblast-derived exosomes and microparticles into the maternal circulation. Although there are no reports of elevated *EGFR* gene expression in preeclamptic endothelial cells, the ongoing shedding of placental vesicles into the vascular system raises the possibility that EGFR-rich vesicles might fuse with endothelium, thereby contributing to the symptoms of PE by interrupting angiogenesis and blocking pregnancy-adapted vasodilatory function.

Key Words

- ▶ EGFR
- ▶ exosome
- ▶ endothelium
- ▶ preeclampsia
- ▶ pregnancy

*Journal of Molecular
Endocrinology*
(2022) **70**, e220105

Introduction

Preeclampsia (PE) is a hypertensive disease of pregnancy that is both a leading cause of maternal morbidity and mortality worldwide and confers an increased risk for developing cardiovascular diseases later in life (reviewed by [Lee & Tubby 2015](#)). To date, nothing can definitively prevent PE, and the only 'curative' treatment is still delivery of the baby and placenta. Attempts to map PE-specific patterns of placental gene expression have identified at least three major subclasses of PE, each with its own unique expression profile for known PE markers ([Leavey et al. 2015](#)). Significant progress has been made, however,

in understanding the mechanisms of normal vascular adaptation to pregnancy, which comprises early angiogenic events and enhancement of pro-vasodilatory signaling, facilitated by the augmentation of connexin 43 (Cx43) gap junction-mediated intercellular Ca²⁺ signaling ([Yi et al. 2010](#)). We have previously pointed out that PE is associated with alterations in both growth factors and cytokines in a manner reminiscent of 'wounding' responses, and these same factors bring about loss of pregnancy-adapted Cx43 function and vasodilation (reviewed in [Bird et al. 2013](#)). While growth factors and cytokines are indeed essential

for the establishment of pregnancy and the continuing development of the fetus, they require precise regulation to avoid the pathologies of pregnancy that result from deficient or excessive endocrine and paracrine signaling.

Some growth factors, such as vascular endothelial growth factor (VEGF) and placental growth factor (PlGF), have been studied extensively in the context of PE, but the role that altered epidermal growth factor (EGF) receptor (EGFR) signaling might play in promoting PE remains comparatively unexamined. Although accumulating data in rodent models suggest that aberrant EGFR signaling is likely a factor in the development and/or maintenance of general hypertensive diseases (Sambhi *et al.* 1992, Florian & Watts 1999, Kagiya *et al.* 2002, 2003, Ying & Sanders 2005, Kim *et al.* 2006, Kelly *et al.* 2017), there is little published research on EGFR signaling in the context of hypertensive disease during pregnancy, probably because EGFR is not considered a major regulator of normal angiogenesis or vasodilatory function in either uterine or umbilical endothelium. Nonetheless, transcriptome meta-analysis has suggested that altered gene expression of *EGFR* and/or its ligands may be a factor in the impaired placental function associated with PE (Moslehi *et al.* 2013), but there has been no direct evidence to support changes in endothelial cell *EGFR* expression being associated with endothelial dysfunction in PE.

Interestingly, *EGFR* is generally expressed at low levels in 'normal' endothelial cells. In the vascular endothelium, the VEGF receptor (VEGFR) system is considered the key regulator of angiogenesis (reviewed in Ferrara & Davis-Smyth 1997), while the fibroblast growth factor receptor (FGFR) system is the key mediator of mitogenesis (Lindner *et al.* 1990). Recently, we have shown that artificial increases in EGFR expression in cultured uterine artery endothelial cells (UAEC) lead to a shift in responsiveness away from VEGFR and toward EGFR, suggesting that endothelial EGFR expression may normally be low to avoid interference with VEGFR control of angiogenesis (Clemente *et al.* 2020). Indeed, the purpose of this review is to now explore the evidence that endothelial dysfunction observed in PE might indeed result from the elevation of endothelial EGFR through exosomal transfer from the PE placenta.

During a healthy pregnancy, trophoblasts are known to synthesize large amounts of EGFR protein (Uhlén *et al.* 2015), and the placenta releases syncytiotrophoblast (STB)-derived exosomes and microparticles into the maternal circulation (reviewed in Tannetta *et al.* 2017). The plasma concentration of placenta-derived exosomes has also been shown to rise markedly in each subsequent trimester

(Salomon *et al.* 2014), and this is even greater in the third trimester in a subset of PE cases (Pillay *et al.* 2016). Although there are no reports of elevated *EGFR* gene *transcript* expression in preeclamptic endothelial cells, the ongoing shedding of placental vesicles into the vascular system raises the possibility that EGFR-rich vesicles might be taken up by the endothelium, promoting the symptoms of PE by interrupting angiogenesis and blocking pregnancy-adapted vasodilatory function.

Before proposing a new model for placental EGFR-mediated endothelial dysfunction, this review will i) provide a brief overview of EGFR signaling in general, ii) review ways in which EGFR is critical for placental function and embryonic and fetal development, iii) cite the limited and contradictory data on altered EGFR expression and activity in PE, and iv) examine preliminary evidence suggesting that improperly regulated EGFR signaling can have deleterious effects on pregnancy-adapted vasodilation.

It should be noted that the term 'EGFR signaling' should only be interpreted to mean 'any signaling event that involves EGFR', and *not* 'signaling performed exclusively by EGFR'. Effector molecules that are activated by EGFR in one cellular environment may also be mimicked by another receptor (e.g. VEGFR2, FGFR1) in a different setting.

The epidermal growth factor receptor

EGFR is a 170-kDa transmembrane protein expressed in a wide variety of cell types. It is one of four members of the ErbB family of receptor tyrosine kinases comprising EGFR (ErbB1), HER2 (ErbB2), the kinase-impaired ErbB3, and the EGFR-like ErbB4. In healthy cells, EGFR sits dormant in the plasma membrane as a monomer (Yamashita *et al.* 2015) or inactive symmetric dimer (Jura *et al.* 2009) until it is activated by binding with one of seven known ligands, including EGF, heparin-binding EGF-like growth factor (HBEGF), and transforming growth factor alpha (TGF α) (Wilson *et al.* 2009). Binding of ligand to EGFR induces a conformational change in its transmembrane domain that releases EGFR from its intrinsically disordered basal inactive state (Shan *et al.* 2012), so allowing the formation of active asymmetric dimers (Zhang *et al.* 2006; reviewed in Purba *et al.* 2017). This asymmetric dimerization stimulates EGFR's tyrosine kinase activity, which results in the autophosphorylation of several tyrosines in the receptor's C-terminal tail, and subsequently receptor internalization. These phosphotyrosine residues serve as docking sites for a diverse array of effector molecules that initiate signaling cascades along major pathways, including PI3K/Akt, MAPK,

JAK-STAT, and PLC γ (reviewed in Jones & Rappoport 2014, Wee & Wang 2017). In some cellular environments, EGFR can also phosphorylate tyrosine residues of other receptors and be transactivated by G-protein coupled receptor (GPCR) agonists (Daub *et al.* 1996).

Under normal conditions, EGFR plays key roles in cell proliferation, tissue homeostasis, organismal growth and development, wound healing, immune function, and embryogenesis (reviewed in Wee & Wang 2017). However, precisely because of its critical importance in so many biological processes, the consequences of aberrant EGFR signaling can be deadly. Deficient EGFR signaling is associated with skin disorders, inflammatory bowel disease, and improper cartilage formation leading to osteoarthritis (Brooke *et al.* 2014, Jia *et al.* 2016), while excessive EGFR signaling due to overexpression or activating mutation drives the progression of many cancers, including aggressive cancers of the breast, ovary, prostate, lung, colon, and brain (reviewed in Normanno *et al.* 2006).

EGFR in healthy pregnancy

Expression and localization of EGFR and its ligands in a healthy pregnancy

The critical importance of EGFR in pregnancy is immediately suggested by its high level of expression in the placenta, which far exceeds the levels observed in all other organs (Uhlén *et al.* 2015). Placental expression of EGFR varies in localization over the course of pregnancy, as does expression of EGFR ligands. Immunohistochemical staining of human placental tissues from weeks 4 and 5 of the first trimester showed that almost all expression of EGF and EGFR was localized in cytotrophoblasts (CTBs). During weeks 6–12, however, both EGF and EGFR were localized primarily in STBs (Ladines-Llave *et al.* 1991), suggesting that the role of placental EGFR changes during different stages of fetal development. Other EGFR ligands, including amphiregulin (AREG) (Lysiak *et al.* 1995) and betacellulin (BTC) (Tanimura *et al.* 2004), are also expressed in the placenta in a compartmentalized and time-dependent manner. TGF α is moderately expressed and HBEGF is robustly expressed in first-trimester decidua and in CTBs and extravillous trophoblasts (EVTB) during all three trimesters (Lysiak *et al.* 1993, Birdsall *et al.* 1996, Leach *et al.* 1999). TGF α is also expressed in the STB during all three trimesters (Lysiak *et al.* 1993), but HBEGF expression is poor in the STB during the first trimester (Yoo *et al.* 1997), when EGFR in the STB appears to be activated primarily by other ligands in an autocrine manner (Ladines-Llave *et al.* 1991,

Lysiak *et al.* 1993, 1995, Tanimura *et al.* 2004). At term, EGFR protein is abundant on the microvillus and basolateral surfaces of STBs (Rao *et al.* 1985), suggesting activation by maternal and fetal ligands, respectively. It is also detected in intracellular organelles, including the endoplasmic reticulum, Golgi apparatus, and lysosomes, consistent with ongoing synthesis and degradation (Ramani *et al.* 1986). The complex spatiotemporal distribution of EGFR and its ligands strongly suggests the necessity for precise regulation of the receptor over the course of pregnancy.

One additional signaling molecule worth mentioning, although not formally recognized as an EGFR ligand, is EGF-like domain 7 (EGFL7). EGFL7 is a secreted angiogenic factor whose overexpression has been positively correlated with the phospho-activation of EGFR. Conversely, knockdown of the *EGFL7* gene was shown to inhibit the activation of EGFR signaling cascades, including the PI3K/Akt and MEK/ERK pathways (Luo *et al.* 2014, Wang *et al.* 2017, Liu *et al.* 2018). Generally speaking, adult tissues express little to no *EGFL7* except in those tissues that are heavily vascularized such as lung, heart, kidney, ovary, and uterus. *EGFL7* mRNA is abundantly expressed in both human umbilical vein endothelial cells (HUVEC) and bovine aortic endothelial cells, whereas a variety of nonendothelial cell lines have been found to express little to none (Fitch *et al.* 2004). Under normal conditions, EGFL7 promotes VEGF-induced sprouting angiogenesis and supports endothelial barrier function via tyrosine phosphorylation of VE-cadherin, while knockdown of *EGFL7* inhibits these processes (Usuba *et al.* 2019). Primary human trophoblasts have been shown to respond to hypoxia by increasing *EGFL7* transcription, presumably in an attempt to improve cellular oxygenation. When cultured in 1% O₂ for 24 h, the cells exhibited a HIF1 α -independent 2.2-fold upregulation of *EGFL7* mRNA ($P < 0.0001$) (Whitehead *et al.* 2018).

EGFR in fertility and fetal development

Egfr knockout studies in mice have revealed the vital function of EGFR in pregnancy, as evidenced by the fact that embryos of whole-body *Egfr* knockout mice die in gestation (Sibilia & Wagner 1995, Threadgill *et al.* 1995). To determine the importance of EGFR and other members of the ERBB family of receptors in fertility, Large *et al.* (2014) created a mouse model in which *Egfr* expression was ablated exclusively in the uterus, leaving expression at normal levels in all other tissues. Of the seven females tested, four gave birth to only a few pups in a 6-month period and three produced no pups at all. This appeared to be related to incomplete decidualization caused by the absence of

expression of critical EGFR effectors such as Bmp2 (Lee *et al.* 2007) and Wnt4 (Franco *et al.* 2011), which mediate decidual cell proliferation, survival, and differentiation. In comparison, knockout of uterine *ErbB2* (*Her2*) or *ErbB3*, which are also expressed in the endometrium, produced only a small reduction in average litter size, suggesting that EGFR is the only member of the ERBB receptor family that is necessary and sufficient for proper endometrial function. Large *et al.* further demonstrated the essential role of EGFR in decidualization using a primary human endometrial stromal cell (HESC) culture model. Decidualization markers such as IGFBP1 and prolactin are known to be induced in HESC culture when these cells are treated with a combination of estrogen, progestin, and cAMP (Huang *et al.* 1987, Giudice *et al.* 1992). However, expression of these markers was significantly reduced when HESC was transfected with EGFR siRNA, and the cells exhibited an aberrant morphology (Large *et al.* 2014).

EGFR is also involved in preimplantation development of the embryo. Administration of EGF has been shown to enhance the *in vitro* rate of blastocyst formation of several species, including mice (Dadi *et al.* 2007), pigs (Abeydeera *et al.* 1998, Wei *et al.* 2001), cows (Lonergan *et al.* 1996, Watson *et al.* 2000), and sheep (Guler *et al.* 2000). In cultures of fertilized sheep oocytes, for example, EGF more than doubled the number of blastocysts formed (1.4 ± 0.1 vs 0.6 ± 0.2 per ewe) for the duration of the culture period (Grazul-Bilska *et al.* 2003). The most important EGFR ligand in the earliest days of pregnancy, however, may be HBEGF. The functions of HBEGF are numerous, including a central role in the establishment of pregnancy, development of human embryos to the blastocyst stage and beyond, and mediation of trophoblast motility (reviewed in Jessmon *et al.* 2009). During implantation, endometrial HBEGF serves as both a pro-survival growth factor and, in its transmembrane 'proHBEGF' form, an attachment factor for blastocysts. Plasma membrane-tethered proHBEGF binds to either EGFR or heparin sulfate proteoglycan on the surface of an adjacent blastocyst, facilitating both the adherence of the blastocyst and the initiation of juxtacrine signaling (Raab *et al.* 1996).

EGFR promotes trophoblast proliferation

EGFR ligands have been shown to promote trophoblast proliferation *in vitro*. In cultures of first-trimester human trophoblasts, EGF (Maruo *et al.* 1992), TGF α (Lysiak *et al.* 1993), and AREG (Lysiak *et al.* 1995) were each shown to increase the rate of proliferation. Filla *et al.* (1993) additionally showed that EGF and TGF α stimulated growth

in cultures derived from second-trimester trophoblasts. The unique expression profiles of EGFR and HER2 in first-trimester CTB further suggest that EGFR mediates proliferation, as evidenced by the presence of EGFR and the absence of HER2 in proliferative villous CTB. Inversely, HER2 appears to mediate invasion and differentiation, since HER2 was expressed in invasive, extravillous CTB, but EGFR was undetected in these non-proliferative cells (Jokhi *et al.* 1994). However, in cultured CTB derived from term placentas, EGFR activation by EGF induced differentiation into STBs (Morrish *et al.* 1987), suggesting that the role of EGFR changes over the duration of pregnancy.

EGFR signaling protects trophoblasts from apoptosis

Apoptosis, or programmed cell death, is a necessary occurrence in the differentiation of tissues. The hypoxic environment and elevated levels of inflammatory cytokines observed in PE placentas, however, can stimulate excessive apoptosis, resulting in placental dysfunction and retarded growth. One of the most important functions of EGFR during pregnancy is protection against apoptosis. Indeed, EGFR activation can protect against apoptosis induced by hypoxia (Perkins *et al.* 2002, Armant *et al.* 2006, Humphrey *et al.* 2008), reactive oxygen species (Moll *et al.* 2007), and inflammatory cytokines (Garcia-Lloret *et al.* 1996) in a number of cell models. Interestingly, supraphysiological concentrations of EGF (>50 ng/mL) provided reduced protection against cytokine-induced trophoblast death, suggesting that *excessive* stimulation of EGFR activity can also harm trophoblast viability (Garcia-Lloret *et al.* 1996), perhaps due to compensatory downregulation of the receptor itself, or associated signaling kinases.

EGFR signaling and angiogenesis

While under normal circumstances VEGF is the key regulator of angiogenesis in the vascular endothelium, treatment of HUVEC with HBEGF or EGF can induce VEGF-independent migration, capillary tube formation, and angiogenesis (Mehta & Besner 2007). HBEGF also strongly stimulated expression of eNOS mRNA, increased eNOS protein synthesis, and boosted the release of nitric oxide (NO). Pretreatment of HUVEC with the PI3K kinase inhibitor wortmannin or the EGFR kinase inhibitor AG1478 blocked these effects, showing EGFR-mediated eNOS activity to be regulated via the PI3K pathway (Mehta *et al.* 2008). EGFR expression in endothelial cells tends to be modest, as stated earlier, but these data suggest that EGFR

could assume direct control of angiogenesis and enhance eNOS function in an environment where it outcompeted VEGFR1/2 for access to the relevant effector molecules.

Soluble EGFR in the placenta

In addition to its robust expression of mRNA encoding the full-length 170 kDa EGFR, the placenta also expresses a number of naturally occurring alternative *EGFR* transcripts that encode truncated variants of the full-length receptor termed ‘soluble EGFR’ (sEGFR). These include the 1.8-kb mRNA transcript that encodes a secreted 60 kDa isoform (p60 EGFR) and the 3.0-kb transcript that encodes a plasma membrane-tethered 110 kDa isoform (p110 EGFR) (Reiter & Maihle 2003). Both sEGFR variants lack all of the typical domains of the full-length receptor except the extracellular ligand-binding domain, rendering them devoid of any kinase activity. These alternative transcripts are poorly expressed in most human tissues, but the highest expression level occurs in placenta (Reiter & Maihle 2003).

Since the ligand-binding domain of sEGFR isoforms is identical to that of the full-length receptor, sEGFR isoforms are capable of forming complexes with EGFR ligands but does not induce sEGFR homodimerization (Günther *et al.* 1990, Flickinger *et al.* 1992). sEGFR is generally thought to be a negative regulator of EGFR signaling, but it is unclear whether inhibition of EGFR kinase activity is achieved by ‘mopping up’ available ligand (Flickinger *et al.* 1992) or by dimerizing with the full-length EGFR (Basu *et al.* 1989). In hindsight, it seems likely that these two distinct actions – ligand binding and dimerization with full-length EGFR – are distinct steps in a single mechanism.

Dysregulation of EGFR during pregnancy

EGFR in preeclampsia

Relatively few studies have addressed the subject of EGFR signaling in the context of PE. A transcriptome meta-analysis found that the EGFR gene and transcription regulators of EGF-dependent pathways were significantly upregulated in preeclamptic placentas, leading the authors to postulate that EGFR was among the 50 or so genes ‘most relevant to preeclampsia’ (Moslehi *et al.* 2013). Surprisingly, the upregulation of EGFR and its transcriptional regulators was associated with a deficiency of EGFR signaling rather than an increase (Moslehi *et al.* 2013), which is supported by observations of stunted syncytial differentiation in PE (reviewed in Huppertz 2011). When cultured trophoblasts were exposed to a hypoxic environment for the first

24 h, they exhibited significantly more apoptosis than cells experiencing hypoxia at 48–72 h, suggesting that less differentiated trophoblasts are more vulnerable to the negative effects of hypoxia than more differentiated trophoblasts (Levy *et al.* 2000). This is also consistent with the characterization of PE as a condition of reduced EGF/EGFR signaling (Moslehi *et al.* 2013) since EGF is known to promote trophoblastic differentiation (Morrish *et al.* 1987). In contrast, Hastie *et al.* (2019) found evidence that EGFR mRNA expression and phosphorylation of EGFR and ERK1/2 were significantly increased in severe early-onset preeclamptic placentas compared with control placentas, resulting in the secondary upregulation of sFlt1. The authors speculated that the increased EGFR pathway activity in preeclamptic placenta might be a response to hypoxia. EGFR mRNA and protein expression were found to be elevated in primary CTBs cultured in 1% oxygen for 24 h, just as in severe early-onset PE. Polymorphisms of EGF (Chenthuran *et al.* 2014) and HBEGF (Harendra *et al.* 2012) have also been associated with PE, further suggesting that aberrant EGFR signaling can have negative consequences during pregnancy.

Too little or too much EGFR activity can be harmful during pregnancy

Since, as previously noted, the complete absence of EGFR results in embryonic lethality, it is appropriate to investigate the activity level of EGFR required for healthy placental development. To study the physiological consequences of *attenuated* EGFR signaling, Dackor *et al.* (2009a) created strains of mice that were homozygous for a *hypomorphic* allele of *Egfr* (termed ‘*Egfr^{wa2}*’). The spongiotrophoblast layer of the placentas of mice expressing *Egfr^{wa2}* was significantly thinner or absent, depending on the strain. Embryo growth was retarded in the third week of development, leading the authors to suggest that *Egfr^{wa2}* homozygous mice could model intrauterine growth restriction (IUGR) in humans. Additionally, to study the effects of *excessive* EGFR signaling, Dackor *et al.* (2009b) created strains of mice that were homozygous or heterozygous for the *hypermorphic* *Egfr^{Dsk5}* allele. *Egfr^{Dsk5}* heterozygous females exhibited enlarged placentas with a thickened spongiotrophoblast layer, which was associated with low fertility and pregnancy loss in some strains, independent of embryo genotype. *Egfr^{Dsk5}* homozygotes showed even greater placental enlargement, and this too was often associated with embryo death prior to day 15.5. Together, these experiments support the idea of a ‘Goldilocks zone’ for maternal and fetal EGFR signaling,

in which EGFR plays an essential role in pregnancy, but either too little or too much activity can have deleterious consequences. As previously mentioned, PE has already been associated with reduced EGFR signaling. Is it possible that *excessive* EGFR activity could also, at least in some cases, exacerbate the symptoms of PE?

EGFR ligand expression in PE

The current evidence for expression levels of EGFR and its ligands in PE is limited and contradictory. [Kosovic et al. \(2017\)](#) compared EGF and EGFR expression separately in decidual cells (DC), villous trophoblasts (VTB), and EVTB obtained from either normal (38 weeks) or preeclamptic placentas (38 weeks). There was no significant difference between the normal and PE groups in maternal and gestational age, neonatal sex, or birth weight. No between-group differences were found in the expression levels of EGF or EGFR in DC, VTB, or EVTB. Similarly, no difference was observed in urine EGF concentrations at 10–18 weeks between mothers with PE and healthy matched controls ([Lindqvist et al. 1999](#)). Alternatively, immunohistochemical labeling of six EGFR ligands (EGF, HBEGF, TGF α , AREG, EREG, and BTC) in the trophoblasts of placentas from women with PE (mean 32.6 weeks), preterm labor (32.9 weeks), small for gestational age fetuses (32.9 weeks), and normal term placentas (39 weeks) found that EGF, HBEGF, and TGF α were significantly reduced in the basal plate of PE placentas compared to all other groups ([Armant et al. 2015](#)). One study of *serum* EGF concentration in PE pregnancy (32 weeks, median = 93.13 pg/mL) found EGF levels to be more than double those observed in normotensive pregnancy (38.5 weeks, median = 38.82 pg/mL) ([Kupsamy et al. 2019](#)). Yet another study reported that when maternal serum levels of EGF, HBEGF, and TGF α were measured in 20 pregnant women of similar maternal and gestational age (~34 weeks) with or without PE that eventually delivered at term, the median serum concentration of EGF in the PE group (147.5 pg/mL) was less than half that of the median level in the normotensive group (324.3 pg/mL). Interestingly, however, levels of HBEGF and TGF α were not reduced ([Armant et al. 2015](#)), and other evidence suggests HBEGF may actually be significantly elevated ([Charkiewicz et al. 2018](#)). This is physiologically significant if true because HBEGF appears to be the most commonly utilized ligand in known ligand-dependent EGFR transactivation mechanisms.

To summarize, these confusing data on EGFR ligand expression in PE illustrate why the expression of EGFR ligands in PE and their potential role in the etiology and maintenance of the disease is far from settled. It is likely

that each subtype of PE expresses unique tissue-specific levels of EGF ligands, but the impact of these differences on PE pathology remains unclear.

Soluble EGFR in PE

One novel way that the availability of EGFR ligands could be increased in some types of PE is by reduced expression of sEGFR. Measurement of serum concentrations of sEGFR in 172 normotensive or preeclamptic pregnant women showed levels to be significantly lower in preterm PE (33.0 ± 2.68 weeks, $P < 0.001$) and term PE (38.8 ± 1.14 weeks, $P < 0.01$) than matched controls. Conversely, sFlt1 was significantly *higher* in preterm PE ($P < 0.001$) and term PE ($P < 0.01$) than matched controls, and the sFlt1:sEGFR ratio correlated strongly ($R=0.711$) with the severity of preterm PE ([Cui et al. 2018a](#)). Although serum sEGFR level alone could not differentiate between mild and severe forms of preterm PE, alterations in the levels of sEGFR and three other proteins (VEGF \uparrow , sEndoglin \uparrow , PlGF \downarrow) were each shown to be independent predictive markers for PE ([Cui et al. 2018b](#)). Citing known effects of EGFR on vascular tone and sodium retention in arterial hypertension ([Beltowski & Lowicka 2009](#)), [Cui et al.](#) speculated that reduced expression of serum sEGFR in PE might increase the availability of EGFR ligands in the vasculature, thereby boosting EGFR signaling and exacerbating hypertension in PE. [Ilekis et al. \(1995\)](#) found an inverse relationship in the placenta between the expression of the p60 sEGFR transcript and that of the full-length EGFR transcript, opening the possibility that a high concentration of the full-length EGFR protein may necessitate a low concentration of sEGFR and vice versa. This means that higher expression of EGFR may typically be accompanied by greater availability of ligands, further potentiating EGFR activity.

EGFL7 in PE

Initial measurements of changes in EGFL7 expression in PE pregnancies have been contradictory. [Whitehead et al. \(2018\)](#) observed no significant difference in EGFL7 mRNA expression in early- or late-onset PE compared to gestational age-matched normotensive controls. However, elevations in EGFL7 protein levels in PE patients were reported by [Massimiani et al. \(2019\)](#), who were unable to detect circulating EGFL7 in nonpregnant women but found that it was detectable during pregnancy. In PE patients, the mean circulating level of EGFL7 protein at weeks 35–40 was significantly higher

(44 vs 25 $\mu\text{g}/\text{mL}$). Similarly, villous explant cultures from PE placentas at weeks 35–37 released 3 times as much EGFL7 into the culture media in 24 h (mean = 257.99 $\mu\text{g}/\text{mL}$) than did explant samples from controls at weeks 37–39 (mean = 86.76 $\mu\text{g}/\text{mL}$). Notably, the variance was high between samples, with many PE-derived samples exhibiting no difference from controls and others showing stark differences, suggesting that elevated EGFL7 may only be a feature of particular PE subtypes. Thus, while EGFL7 may play a role in the response to hypoxia, it is not likely to be a fundamental initiating event. In the absence of EGFR elevation, we doubt changes in EGFL7 would be a principal determinant of endothelial dysfunction. However, in endothelial cells with elevated EGFR expression, EGFL7 might further drive excessive EGFR activity.

EGFR transactivation

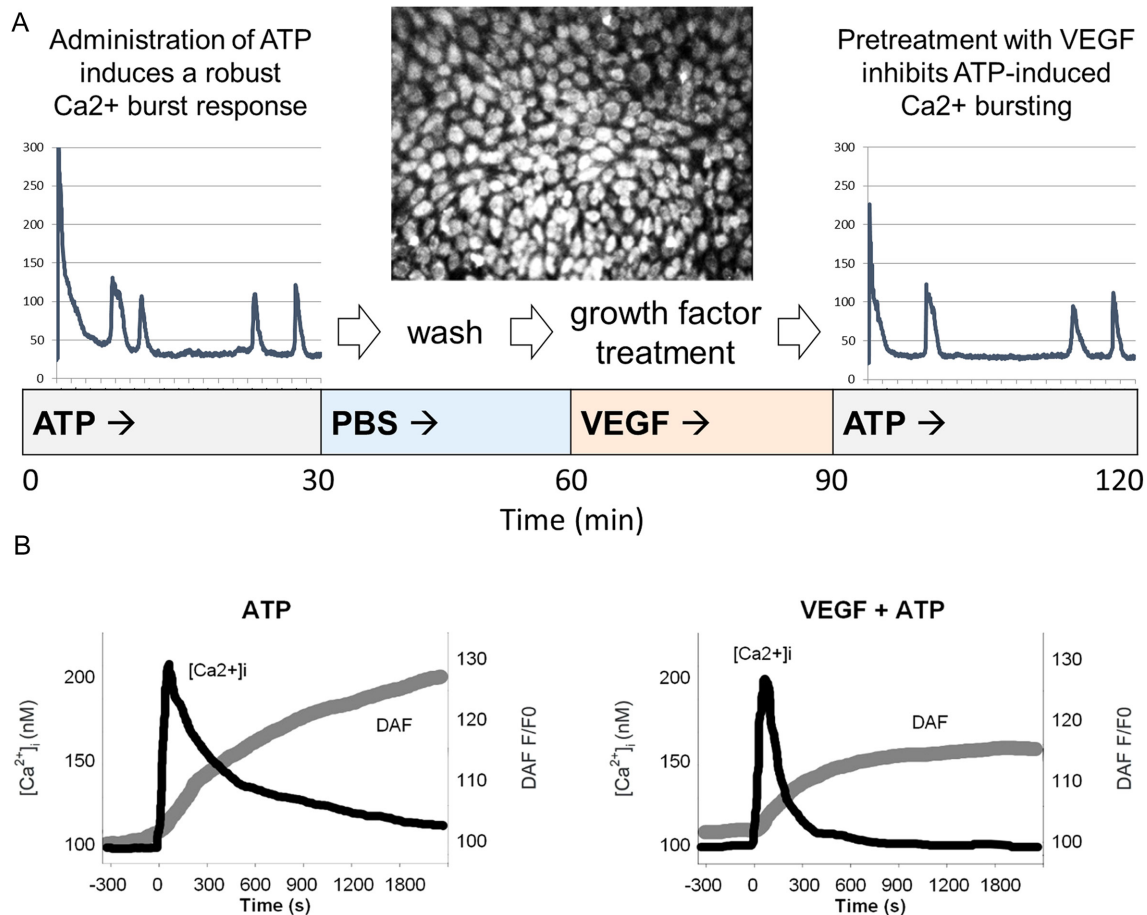
One last important EGFR activation mechanism that may yet be found relevant in PE is ‘transactivation’ by agonists of GPCRs via induction of matrix metalloproteinase (MMP) cleavage of membrane-tethered EGFR ligand (e.g. proHBEGF, proEGF, etc.). GPCR-mediated EGFR transactivation can also occur independently of MMP activity or ligand through interaction with a specific Src family kinase, such as in the case of the muscarinic M2 acetylcholine receptor in COS-7 cells via a mechanism that involves the direct association of EGFR with Fyn, but is independent of Src and Yes (Stirnweiss *et al.* 2006). Cytokines such as TNF α , IL-8, IL-1 α , IL-1 β , and IFN γ are known to be significantly elevated in PE (reviewed in LaMarca *et al.* 2007, Bird *et al.* 2013, Lau *et al.* 2013), and all these have been reported to transactivate EGFR (Argast *et al.* 2004, Chen *et al.* 2004, Tanida *et al.* 2004, Itoh *et al.* 2005, Lee & Tubby 2015). IL-8 transactivation of EGFR, for example, has been observed in microvascular endothelium (Schraufstatter *et al.* 2003), and it has been shown to be capable of inducing phosphorylations in Src, ERK1/2, FAK, Jnk, p38-MAPK, and STAT1/3 (Kyriakakis *et al.* 2011). Interestingly, in addition to transporting EGFR, placental exosomes may also be a source of these transactivating cytokines. When BeWo cells, a placental choriocarcinoma cell line commonly used as an *in vitro* model for the placenta, were treated with exosomes isolated from the serum of early-onset PE or late-onset PE pregnancies, expression of the pro-inflammatory interleukin IL-8 increased and expression of the anti-inflammatory interleukin IL-10 decreased (Maduray *et al.* 2020).

A new model for endothelial dysfunction in preeclampsia

Pregnancy-adapted programming of the endothelium

Pregnancy requires significant enhancements of vascular function to meet the needs of the mother and developing fetus, including increased cardiac output, blood volume, and capacity for vasodilation. These adaptations are dependent on numerous changes in cell signaling that we have termed ‘pregnancy-adapted programming’. One particular adaptation we have studied extensively is the augmented capacity for Cx43 gap junctional communication (GJC). Using cultured UAEC obtained from pregnant ewes (P-UAEC), which retain their pregnancy-enhanced capacity for pro-vasodilatory signaling (Bird *et al.* 2000, Gifford *et al.* 2003), we have shown Cx43 gap junctional enhancement to be necessary and sufficient for optimizing the intercellular Ca $^{2+}$ signaling that drives sustained pregnancy-enhanced NO production (Yi *et al.* 2010). A consequence of this fact is that any signaling event that diminishes Cx43 GJC could potentially inhibit pregnancy-adapted vasodilation. Supporting this assertion, we have established that treatment of P-UAEC monolayers with growth factors and cytokines reduces the agonist-induced Ca $^{2+}$ bursting otherwise required for pregnancy-adapted vasodilation (Fig. 1) (Yi *et al.* 2011, Boeldt *et al.* 2015, Ampey *et al.* 2019).

Recently, we have shown more specifically that Ca $^{2+}$ bursting is attenuated in P-UAEC via Src- and ERK-mediated phosphorylations of Cx43 in gap junctional plaques (Boeldt *et al.* 2015, Ampey *et al.* 2019). Since these same phosphorylation events occur in wound healing, it is worthwhile to review briefly the local environment of an acute wound site. When tissue is wounded, the immediate elevation of growth factors and cytokines results in inhibitory phosphorylations of Cx43 (reviewed in Barrientos *et al.* 2008, Widgerow 2012). The inhibition of Cx43 function reduces cell-to-cell connectivity, which allows the removal of damaged tissue and the proliferation and migration of new cells into the wounded area. As this process completes, the local concentrations of growth factors and cytokines return to basal levels and Cx43 function returns to normal (Coutinho *et al.* 2003). In a chronically wounded state, however, the wound site may continue to exhibit elevated concentrations of cytokines, including TNF α , IL-1, and IL-6, and growth factors such as VEGF, bFGF, and EGF (reviewed in Barrientos *et al.* 2008), resulting in sustained inhibition of Cx43 gap junctional assembly and channel function (Laird 2005, Moreno 2005). Indeed, the parallels between wound healing and

**Figure 1**

VEGF pretreatment of an endothelial cell monolayer inhibits the ATP-induced Ca^{2+} burst response. Pooled passage 4 P-UAEC grown in 35-mm glass-bottom microwell dishes to 95–100% confluence were then loaded with Fura-2 AM, a free Ca^{2+} dye. Cells were then incubated with $100 \mu\text{M}$ ATP and the data recorded for 80–100 cells simultaneously for 30 min. After the initial ATP treatment, the dish was washed and allowed to sit for 30 min. Then, VEGF (or another growth factor or cytokine) was added and recorded for 30 min before a subsequent treatment of ATP was added for an additional 30 min. Ca^{2+} bursts were then counted for the 'before' and 'after' VEGF treatments. Finally, before and after counts of cell burst numbers were compared (Boeldt *et al.* 2015). (A) The tracing from a single cell stimulated with AP before (left) or after (right) treatment with VEGF is shown. Note the narrowing of the initial peak and the fewer subsequent peaks of Ca^{2+} following VEGF treatment, especially in the period 5–15 min. These findings are consistent with (B), where intact human umbilical vein tissue is loaded with Fura-2 and DAF-2 (to measure free Ca^{2+} and NO, respectively) and treated with ATP before and after VEGF treatment (Yi *et al.* 2010). These data show overall endothelium response, i.e. the mean level of Ca^{2+} elevated above the baseline and NO production. Before VEGF exposure, Ca^{2+} and NO responses are robust. Following VEGF treatment, the mean level of free Ca^{2+} falls more quickly, and NO production is suppressed.

the suppression of vascular adaptation to pregnancy have led us to ask if the poor vasodilation observed in PE is in fact due to the same signaling pathways observed in chronic wounding (reviewed in Bird *et al.* 2013). Could some subclasses of PE essentially be the body mistakenly reacting to pregnancy as though it were a non-healing wound?

EGFR-mediated endothelial dysfunction in cultured uterine artery cells

We have recently confirmed that one such pregnancy-associated and wounding site growth factor, VEGF (acting through VEGFR2), induces inhibitory phosphorylations

of Cx43 in P-UAEC via Src and ERK (Boeldt *et al.* 2015). EGF has also been shown to inhibit GJC in several cell types (Madhukar *et al.* 1989, Lau *et al.* 1992, Oh *et al.* 1993); however, EGF is not able to inhibit Ca^{2+} bursting in P-UAEC as VEGF does, suggesting that the low endogenous receptor number (~ 7000 EGFR/cell) is insufficient to couple to the signaling pathways that mediate inhibitory Cx43 phosphorylations (Clemente *et al.* 2020). To determine if the EGF/EGFR system could substitute for the VEGF/VEGFR2 system, we overexpressed EGFR in P-UAEC via adenoviral transduction. Although these P-UAEC now exhibited constitutive EGFR autophosphorylation, this high basal activity was not sufficient to suppress

Ca²⁺ bursting. However, adding EGF treatment to these modified cells induced phosphorylations of ERK1/2 and Cx43 and inhibited Ca²⁺ bursting to the same degree as VEGF. Interestingly, VEGF treatment no longer inhibited Ca²⁺ bursting in P-UAEC with added EGFR, as if EGFR had ‘hijacked’ the molecular machinery formerly utilized by VEGFR2 (Fig. 2). We tentatively proposed that overexpression of EGFR resulted in receptor localization in membrane regions where it was normally absent and so could now recruit pools of key effector molecules (e.g. adapter proteins, intermediate kinases, etc.) away from VEGFR2, allowing EGFR to mediate Cx43 phosphorylation instead. If this is indeed the case, it follows that the low endogenous EGFR expression in P-UAEC *in vivo* may be necessary for VEGFR-2 to retain control of ERK-mediated regulation of GJC, a committing step to initiating angiogenesis (Clemente *et al.* 2020).

The observation that EGFR could induce PE-like endothelial cell dysfunction in our experimental model led us to ask if this mechanism might actually be active in the uterine arteries of women with PE. For our *in vitro* model of EGFR-mediated dysfunction to occur *in vivo*, the uterine arteries would need to overexpress EGFR; however, excess EGFR (and perhaps its ligands) might not need to be synthesized by the arterial endothelium. It could instead come from the richest source of EGFR in the mother's body – the placenta – through the shedding of EGFR-rich exosomes and other extracellular vesicles (EVs).

Could placenta-derived EGFR suppress pregnancy-adapted vasodilation in PE?

Exosomes are EVs that originate in the endocytic pathway, characterized by a cup-shaped appearance and a diameter of 40–160 nm (reviewed in Kalluri & LeBleu 2020). They are secreted by many tissue types and possess common identifying markers (e.g. CD63). Exosomes of placental origin are uniquely identified by the presence of placental alkaline phosphatase (PLAP), an enzyme isoform produced exclusively by the placenta (Sabapatha *et al.* 2006). Placental (PLAP+) and non-placental exosomes can be detected in maternal plasma at 6 weeks of pregnancy and increase in concentration throughout the first trimester (Salomon *et al.* 2014, Sarker *et al.* 2014). In healthy pregnant women, plasma concentration of exosomes in the first trimester (*N*=20, 6–12 weeks) was found to be 50× higher than measured in non-pregnant women (*N*=9), and the level of PLAP+ exosomes increased markedly in each subsequent trimester (Salomon *et al.* 2014). In preclamptic pregnancies, Pillay *et al.* (2016) found that the plasma

concentration of PLAP+ exosomes increased in the third trimester only in early-onset PE and decreased in plasma from late-onset PE, suggesting that the shedding of PLAP+ exosomes may be dependent on PE type. Furthermore, EVs from healthy placentas and diseased placentas differ in content. When peripheral blood mononuclear cells were exposed to microparticles from the plasma membranes of hypoxic trophoblasts, they experienced a faster and more robust inflammatory response than when the cells were exposed to microparticles from normal trophoblasts (Lee *et al.* 2012). Similarly, microparticles from the peripheral venous blood of healthy pregnant women protected against apoptosis and promoted migration and tube formation in early-stage trophoblasts. In contrast, these processes were inhibited when the cells were incubated with microparticles from women with gestational hypertension or PE (Shomer *et al.* 2013). Another study found that the content, quantity, and bioactivity of CTB-derived exosomes obtained from conditioned media correlated inversely with oxygen tension. Exosomes from the most hypoxic environment (1% O₂) stimulated the greatest invasion and proliferation of EVTb, suggesting that exosome-induced EVTb migration is a normal adaptive response to placental hypoxia. The authors concluded that CTBs regulate EVTb phenotype by altering the protein content and secretion rate of exosomes in response to oxygen tension (Salomon *et al.* 2013). In this context, Whigham *et al.* (2019) proposed using the content of placenta-derived EVs in the maternal circulation as a tool for diagnosing PE and other diseases of pregnancy and designing appropriate therapies.

Placental trophoblasts are known to express increasing amounts of EGFR mRNA and protein over the course of pregnancy (Magid *et al.* 1985, Chen *et al.* 1988), and we have identified shed PLAP+/EGFR+ EVs in first-trimester plasma samples using nanoscale high-resolution flow cytometry (Clemente *et al.* 2020). These observations led us to hypothesize that some of these placenta-derived EGFR+ exosomes and/or microparticles could be taken up by the arterial endothelium, thereby transferring EGFR from the placenta to the uterine and systemic vasculature. While exosomal transfer of RNAs, proteins, etc. appears to be a normal part of pregnancy, excessive transfer of EGFR, its ligands, and associated signaling molecules in endothelial cells could negatively impact maternal vasodilation and perhaps drive some subtypes of PE (Fig. 3).

Although this mechanism has yet to be demonstrated in PE, cellular pathology due to the transfer of EGFR+ exosomes has been observed in cancer. Gastric cancer cells have been shown to secrete EGFR+ exosomes that fuse with the plasma membranes of liver stromal cells.

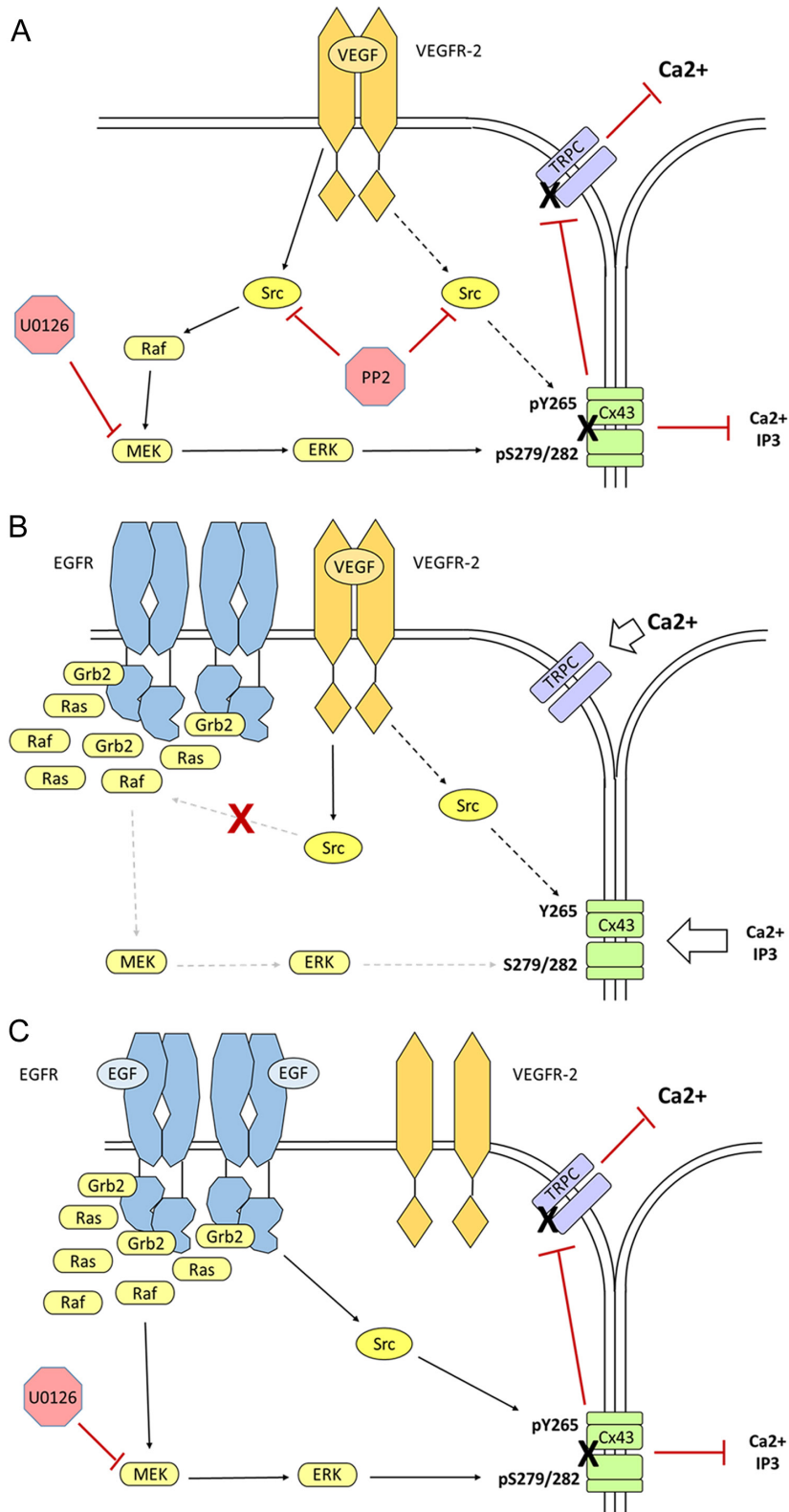
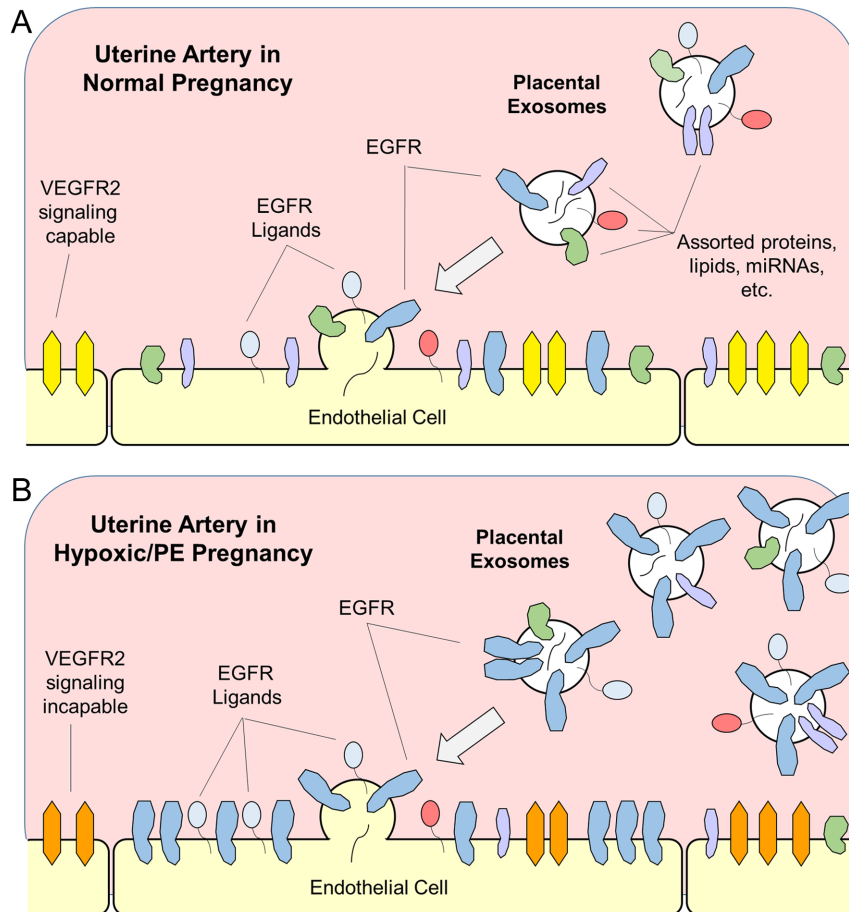


Figure 2

Overexpression of EGFR in P-UAEC suppresses the ability of VEGFR2 to activate Cx43-associated ERK1/2. (A) VEGF administration (10 ng/mL) triggers the formation of activated VEGFR-2 homodimers, which initiates Src-mediated phosphorylation of Cx43 Y265 and Src-dependent ERK-mediated phosphorylation of Cx43 S279/282, which results in gap junctional gate closure and loss of periodic TRP channel-mediated Ca²⁺ entry needed for pregnancy-adapted vasodilation. While the exact nature of communication between Cx43 opening and TRPC channel activation remains unclear, pharmacological inhibition of either Src (PP2, 10 μM) or MEK (U0126, 10 μM) protects the sustained Ca²⁺ burst response from VEGF-induced downregulation. (B) Overexpression of EGFR appears to have significant effects on the local environment at the plasma membrane, as evidenced by the fact that VEGF was not able to inhibit ATP-stimulated Ca²⁺ bursting in the presence of concentrated EGFR. We proposed that the overexpression of EGFR in P-UAEC localizes the receptor in membrane regions where it is normally absent, thereby conferring access to effector molecules that it would otherwise be denied. The constitutively autophosphorylated C-terminal tail of EGFR serves as a continuous source of active phosphotyrosine docking sites, thereby acting as a sink for effector molecules such as SOS, Grb2, the Ras-GTPase, Raf-1, Shc, Cbl, and PLCγ. This effectively reduces their availability for other receptors such as VEGFR2. Of note, EGFR does not prevent VEGF-activated Src phosphorylation of Cx43 Y265, which is known to initiate gap junction disassembly but is apparently not associated with acute gate closure of the gap junction. (C) Normally, treatment of P-UAEC with EGF has no significant effect on gap junctional communication or Ca²⁺ bursting, presumably due to the low expression level of EGFR. However, when P-UAEC that overexpress EGFR are treated with EGF (10 ng/mL), Src- and ERK-mediated phosphorylations of Cx43 occur and Ca²⁺ bursting is inhibited. Unlike VEGFR2-mediated Ca²⁺ burst inhibition, the activation of MAPK pathway by EGFR does not require Src. Only pretreatment with the MEK inhibitor U0126 protects against EGFR-induced gap junctional closure and impaired Ca²⁺ bursting.

**Figure 3**

Putative mechanism for EGFR-mediated endothelial cell dysfunction in PE. (A) Exosomes and microparticles containing a variety of proteins, micro RNAs, etc. are released from the placenta into the uterine and systemic vasculature, some of which may fuse with arterial endothelium. This exosomal fusion is likely to be benign or beneficial. As delivery of exogenous EGFR (and potentially ligands, EGFL7, etc.) increases with time, there may be a limit placed on the ability of VEGFR (yellow) to control endothelial function and particularly late-term angiogenesis. (B) In PE pregnancy, where exosomal delivery may further increase, excessive delivery of EGFR and related signaling molecules to the endothelial plasma membrane now overwhelms the VEGFR2 (orange) signaling system completely, rendering the receptor incapable of endothelial cell control. The hypoxia and/or inflammation associated with PE is likely to alter not only EGFR concentration, but signaling adaptors, kinase subtypes, and miRNA co-delivered in the same PE placenta-derived vesicles, reflecting the placental response to physiologic distress.

The exogenous EGFR facilitates cancer proliferation by providing an otherwise absent binding site for the c-MET receptor on metastatic cancer cells (Zhang *et al.* 2017). Similarly, exosomes secreted by cultured hypoxic prostate cancer cells have been reported to induce prostate stromal cells to exhibit a cancer-associated fibroblast phenotype and become more invasive (Ramteke *et al.* 2015). More recently, the transfer of exosomal wild-type EGFR to cancer cells that express activating EGFR mutations was found to induce resistance to the tyrosine kinase inhibitor osimertinib (Wu *et al.* 2021). It should also be noted that although we are the first to specifically propose EGFR itself from placental vesicles as a driver of endothelial cell dysfunction in PE, negative effects of placental vesicles on vasodilation were first reported over two decades ago. When STB microvillous membrane vesicles were perfused through precontracted subcutaneous arteries obtained from fat biopsies, the arteries displayed a reduced relaxation response to acetylcholine treatment (Cockell *et al.* 1997). Additionally, overnight incubation with microparticles from preeclamptic serum caused abolishment of the bradykinin-mediated relaxation

otherwise observed in the presence of healthy pregnant microparticles (Vanwijk *et al.* 2002).

When considering the plausibility of placental EGFR-mediated endothelial dysfunction as a factor in PE, it is sensible to ask why no one has reported observing this mechanism before. However, two key features of the mechanism explain why it might have eluded detection. First, since the putative influx of EGFR would originate in the placenta, *transcriptome* analysis of endothelial cells from PE patients would not detect it. Secondly, cultured endothelial cells (e.g. HUVEC) from PE patients would quickly lose any exogenous EGFR due to cell division and protein turnover with passage in 'normal' serum conditions. Therefore, only the direct quantification of PLAP and EGFR proteins in *freshly isolated* endothelium from PE patients could reveal the existence of such a mechanism. Leavey *et al.* (2015) used the term 'canonical' to name the early-onset subtype of PE characterized by upregulation of known PE markers such as sFlt1 and sENG, which are not significantly elevated in the other subtypes. The authors described this well-defined cluster as a disorder in which the placenta appears as 'an injured tissue

in a hypoxic environment, secreting increased amounts of placental products into the maternal compartment'. If placental hypoxia does indeed stimulate greater EGFR expression and activity that results in increased sFlt1 levels (Hastie *et al.* 2019), then our proposed mechanism of EGFR-mediated endothelial dysfunction is most likely to be detected in cases of early-onset PE that exhibit elevated sFlt1.

Conclusions

The complex spatiotemporal regulation of expression of EGFR and its ligands in reproductive tissues over the course of pregnancy suggests distinct developmental roles for the receptor. EGFR is critical for both fertility and fetal development. In the placenta, it promotes trophoblast proliferation and protects trophoblasts from apoptosis. Insufficient EGFR activity is associated with pathologies of pregnancy such as IUGR and PE, and excessive EGFR activity is known to produce aberrant placental development in at least one experimental model, but the effects of EGFR overexpression *in the endothelium* remain unclear. The findings outlined above suggest that it could indeed impair normal angiogenesis, allow EGF to impair otherwise pregnancy-adapted vasodilation of the maternal vasculature, and provide novel transactivation pathways for other endocrine factors.

Based on the steadily increasing rate of placental (PLAP+) exosome and microparticle secretion into the maternal vasculature with each successive trimester, and our recent observation of PLAP+/EGFR+ EVs in maternal plasma, it appears likely that some level of EGFR transfer from the placenta to the vascular endothelium is a normal part of pregnancy. Under ordinary circumstances, this is likely benign, or even beneficial, perhaps increasing placental EGFR transfer with time to increasingly limit VEGFR2 function and slow angiogenesis in the second half of pregnancy. EVs from healthy placentas have even been shown to induce positive adaptive responses when administered to endothelial cells in hypoxic conditions, appearing to attempt restoration of healthy cellular oxygenation. Given exosomal effects appear to be a double-edged sword, we should also acknowledge there may also be dependence on other cargo in the exosomes (e.g. signaling adaptors, kinases, miRNA) that are altered in the hypoxic and/or PE placenta. It is also important to note this proposed mechanism is not unique to pregnancy. Our recent findings that EGFR overexpression in cultured P-UAEC remaps signaling pathways away from VEGFR2 and artificially suppresses the Cx43-dependent

Ca²⁺ signaling required for sustained vasodilation are similar to a mechanism reported *in vivo* in cancer cells, whereby EVs secreted by tumors promote proliferation and metastasis by incorporating into healthy cells and hijacking normal processes using newly delivered EGFR. We speculate that increased vesicle shedding from the placenta over time in response to hypoxia above that of normal pregnancy may mediate symptoms of hypertensive PE by transferring *too much* EGFR protein (and possibly EGFR ligands and signaling complexes) to the endothelium. This mechanism is also consistent with the observation that the only truly effective treatment for PE to date is the removal of the placenta.

Declaration of interest

Dr Ian M Bird is a Senior Editor of the *Journal of Endocrinology* & *Journal of Molecular Endocrinology* joint editorial board. Dr Ian M Bird was not involved in the review or editorial process for this paper, on which he is listed as an author. The other author has nothing to disclose.

Funding

Early studies leading to this review were performed under NIH awards R25 GM083252 and T32HD041921 and Unity Point Meriter Foundation Grant 2020-701. Preparation of this manuscript was performed under T32 HD101384.

Acknowledgements

We would like to thank Paul Bertics (University of Wisconsin – Madison) and Terry Morgan (Oregon Health & Science University) for helpful discussions in formulating these ideas.

References

- Abeydeera LR, Wang WH, Cantley TC, Rieke A, Prather RS & Day BN 1998 Presence of epidermal growth factor during *in vitro* maturation of pig oocytes and embryo culture can modulate blastocyst development after *in vitro* fertilization. *Molecular Reproduction and Development* **51** 395–401. ([https://doi.org/10.1002/\(SICI\)1098-2795\(199812\)51:4<395::AID-MRD6>3.0.CO;2-Y](https://doi.org/10.1002/(SICI)1098-2795(199812)51:4<395::AID-MRD6>3.0.CO;2-Y))
- Ampey AC, Boeldt DS, Clemente L, Grummer MA, Yi F, Magness RR & Bird IM 2019 TNF-alpha inhibits pregnancy-adapted Ca²⁺ signaling in uterine artery endothelial cells. *Molecular and Cellular Endocrinology* **488** 14–24. (<https://doi.org/10.1016/j.mce.2019.02.008>)
- Argast GM, Campbell JS, Brooling JT & Fausto N 2004 Epidermal growth factor receptor transactivation mediates tumor necrosis factor-induced hepatocyte replication. *Journal of Biological Chemistry* **279** 34530–34536. (<https://doi.org/10.1074/jbc.M405703200>)
- Armant DR, Kilburn BA, Petkova A, Edwin SS, Duniec-Dmuchowski ZM, Edwards HJ, Romero R & Leach RE 2006 Human trophoblast survival at low oxygen concentrations requires metalloproteinase-mediated shedding of heparin-binding EGF-like growth factor. *Development* **133** 751–759. (<https://doi.org/10.1242/dev.02237>)
- Armant DR, Fritz R, Kilburn BA, Kim YM, Nien JK, Maihle NJ, Romero R & Leach RE 2015 Reduced expression of the epidermal growth factor

- signaling system in preeclampsia. *Placenta* **36** 270–278. (<https://doi.org/10.1016/j.placenta.2014.12.006>)
- Barrientos S, Stojadinovic O, Golinko MS, Brem H & Tomic-Canic M 2008 Growth factors and cytokines in wound healing. *Wound Repair and Regeneration* **16** 585–601. (<https://doi.org/10.1111/j.1524-475X.2008.00410.x>)
- Basu A, Raghunath M, Bishayee S & Das M 1989 Inhibition of tyrosine kinase activity of the epidermal growth factor (EGF) receptor by a truncated receptor form that binds to EGF: role for interreceptor interaction in kinase regulation. *Molecular and Cellular Biology* **9** 671–677. (<https://doi.org/10.1128/mcb.9.2.671-677.1989>)
- Belkowski J & Lowicka E 2009 EGF receptor as a drug target in arterial hypertension. *Mini Reviews in Medicinal Chemistry* **9** 526–538. (<https://doi.org/10.2174/138955709788167619>)
- Bird IM, Sullivan JA, Di T, Cale JM, Zhang L, Zheng J & Magness RR 2000 Pregnancy-dependent changes in cell signaling underlie changes in differential control of vasodilator production in uterine artery endothelial cells. *Endocrinology* **141** 1107–1117. (<https://doi.org/10.1210/endo.141.3.7367>)
- Bird IM, Boeldt DS, Krupp J, Grummer MA, Yi FX & Magness RR 2013 Pregnancy, programming and preeclampsia: gap junctions at the nexus of pregnancy-induced adaptation of endothelial function and endothelial adaptive failure in PE. *Current Vascular Pharmacology* **11** 712–729. (<https://doi.org/10.2174/157016111311050009>)
- Birdsall MA, Hopkisson JF, Grant KE, Barlow DH & Mardon HJ 1996 Expression of heparin-binding epidermal growth factor messenger RNA in the human endometrium. *Molecular Human Reproduction* **2** 31–34. (<https://doi.org/10.1093/molehr/2.1.31>)
- Boeldt DS, Grummer MA, Yi F, Magness RR & Bird IM 2015 Phosphorylation of Ser-279/282 and Tyr-265 positions on Cx43 as possible mediators of VEGF-165 inhibition of pregnancy-adapted Ca²⁺ burst function in ovine uterine artery endothelial cells. *Molecular and Cellular Endocrinology* **412** 73–84. (<https://doi.org/10.1016/j.mce.2015.05.030>)
- Brooke MA, O'Toole EA & Kelsell DP 2014 Exoming into rare skin disease: EGFR deficiency. *Journal of Investigative Dermatology* **134** 2486–2488. (<https://doi.org/10.1038/jid.2014.228>)
- Charkiewicz K, Jasinska E, Gosic J, Koc-Zorawska E, Zorawski M, Kuc P, Raba G, Kluz T, Kalinka J, Sakowicz A, et al. 2018 Angiogenic factor screening in women with mild preeclampsia – new and significant proteins in plasma. *Cytokine* **106** 125–130. (<https://doi.org/10.1016/j.cyt.2017.10.020>)
- Chen CF, Kurachi H, Fujita Y, Terakawa N, Miyake A & Tanizawa O 1988 Changes in epidermal growth factor receptor and its messenger ribonucleic acid levels in human placenta and isolated trophoblast cells during pregnancy. *Journal of Clinical Endocrinology and Metabolism* **67** 1171–1177. (<https://doi.org/10.1210/jcem-67-6-1171>)
- Chen WN, Woodbury RL, Kathmann LE, Opresko LK, Zangar RC, Wiley HS & Thrall BD 2004 Induced autocrine signaling through the epidermal growth factor receptor contributes to the response of mammary epithelial cells to tumor necrosis factor alpha. *Journal of Biological Chemistry* **279** 18488–18496. (<https://doi.org/10.1074/jbc.M310874200>)
- Chenthuran T, Galhenagey GH, Jayasekara RW & Dissanayake VH 2014 Polymorphism in the epidermal growth factor gene is associated with pre-eclampsia and low birthweight. *Journal of Obstetrics and Gynaecology Research* **40** 1235–1242. (<https://doi.org/10.1111/jog.12362>)
- Clemente L, Boeldt DS, Grummer MA, Morita M, Morgan TK, Wiepz GJ, Bertics PJ & Bird IM 2020 Adenoviral transduction of EGFR into pregnancy-adapted uterine artery endothelial cells remaps growth factor induction of endothelial dysfunction. *Molecular and Cellular Endocrinology* **499** 110590. (<https://doi.org/10.1016/j.mce.2019.110590>)
- Cockell AP, Learmont JG, Smárason AK, Redman CW, Sargent IL & Poston L 1997 Human placental syncytiotrophoblast microvillous membranes impair maternal vascular endothelial function. *British Journal of Obstetrics and Gynaecology* **104** 235–240. (<https://doi.org/10.1111/j.1471-0528.1997.tb11052.x>)
- Coutinho P, Qiu C, Frank S, Tamber K & Becker D 2003 Dynamic changes in connexin expression correlate with key events in the wound healing process. *Cell Biology International* **27** 525–541. ([https://doi.org/10.1016/s1065-6995\(03\)00077-5](https://doi.org/10.1016/s1065-6995(03)00077-5))
- Cui L, Shu C, Liu Z, Tong W, Cui M, Wei C, Tang JJ, Liu X, Hai H, Jiang J, et al. 2018a Serum protein marker panel for predicting preeclampsia. *Pregnancy Hypertension* **14** 279–285. (<https://doi.org/10.1016/j.preghy.2018.01.009>)
- Cui L, Shu C, Liu Z, Tong W, Cui M, Wei C, Tang JJ, Liu X, Hu J, Jiang J, et al. 2018b The expression of serum sEGFR, sFlt-1, sEndoglin and PLGF in preeclampsia. *Pregnancy Hypertension* **13** 127–132. (<https://doi.org/10.1016/j.preghy.2018.05.011>)
- Dackor J, Caron KM & Threadgill DW 2009a Placental and embryonic growth restriction in mice with reduced function epidermal growth factor receptor alleles. *Genetics* **183** 207–218. (<https://doi.org/10.1534/genetics.109.104372>)
- Dackor J, Li M & Threadgill DW 2009b Placental overgrowth and fertility defects in mice with a hypermorphic allele of epidermal growth factor receptor. *Mammalian Genome* **20** 339–349. (<https://doi.org/10.1007/s00335-009-9189-2>)
- Dadi TD, Li MW & Lloyd KC 2007 EGF and TGF- α supplementation enhances development of cloned mouse embryos. *Cloning and Stem Cells* **9** 315–326. (<https://doi.org/10.1089/clo.2006.0040>)
- Daub H, Weiss FU, Wallasch C & Ullrich A 1996 Role of transactivation of the EGF receptor in signalling by G-protein-coupled receptors. *Nature* **379** 557–560. (<https://doi.org/10.1038/379557a0>)
- Ferrara N & Davis-Smyth T 1997 The biology of vascular endothelial growth factor. *Endocrine Reviews* **18** 4–25. (<https://doi.org/10.1210/edrv.18.1.0287>)
- Filla MS, Zhang CX & Kaul KL 1993 A potential transforming growth factor alpha/epidermal growth factor receptor autocrine circuit in placental cytotrophoblasts. *Cell Growth and Differentiation* **4** 387–393.
- Fitch MJ, Campagnolo L, Kuhnert F & Stuhlmann H 2004 Eglf7, a novel epidermal growth factor-domain gene expressed in endothelial cells. *Developmental Dynamics* **230** 316–324. (<https://doi.org/10.1002/dvdy.20063>)
- Flickinger TW, Mailhe NJ & Kung HJ 1992 An alternatively processed mRNA from the avian c-ErbB gene encodes a soluble, truncated form of the receptor that can block ligand-dependent transformation. *Molecular and Cellular Biology* **12** 883–893. (<https://doi.org/10.1128/mcb.12.2.883-893.1992>)
- Florian JA & Watts SW 1999 Epidermal growth factor: a potent vasoconstrictor in experimental hypertension. *American Journal of Physiology* **276** H976–H983. (<https://doi.org/10.1152/ajpheart.1999.276.3.H976>)
- Franco HL, Dai D, Lee KY, Rubel CA, Roop D, Boerboom D, Jeong JW, Lydon JB, Bagchi IC, Bagchi MK, et al. 2011 WNT4 is a key regulator of normal postnatal uterine development and progesterone signaling during embryo implantation and decidualization in the mouse. *FASEB Journal* **25** 1176–1187. (<https://doi.org/10.1096/fj.10-175349>)
- García-Lloret MI, Yui J, Winkler-Lowen B & Guilbert LJ 1996 Epidermal growth factor inhibits cytokine-induced apoptosis of primary human trophoblasts. *Journal of Cellular Physiology* **167** 324–332. ([https://doi.org/10.1002/\(SICI\)1097-4652\(199605\)167:2<324::AID-JCP17>3.0.CO;2-7](https://doi.org/10.1002/(SICI)1097-4652(199605)167:2<324::AID-JCP17>3.0.CO;2-7))
- Gifford SM, Cale JM, Tsoi S, Magness RR & Bird IM 2003 Pregnancy-specific changes in uterine artery endothelial cell signaling in vivo are both programmed and retained in primary culture. *Endocrinology* **144** 3639–3650. (<https://doi.org/10.1210/en.2002-0006>)
- Giudice LC, Dsupin BA & Irwin JC 1992 Steroid and peptide regulation of insulin-like growth factor-binding proteins secreted by human endometrial stromal cells is dependent on stromal differentiation. *Journal of Clinical Endocrinology and Metabolism* **75** 1235–1241. (<https://doi.org/10.1210/jcem.75.5.1385468>)
- Grazul-Bilska AT, Choi JT, Bilski JJ, Weigl RM, Kirsch JD, Kraft KC, Reynolds LP & Redmer DA 2003 Effects of epidermal growth factor on early embryonic development after in vitro fertilization of oocytes

- collected from ewes treated with follicle stimulating hormone. *Theriogenology* **59** 1449–1457. ([https://doi.org/10.1016/s0093-691x\(02\)01192-5](https://doi.org/10.1016/s0093-691x(02)01192-5))
- Guler A, Poulin N, Mermillod P, Terqui M & Cognié Y 2000 Effect of growth factors, EGF and IGF-I, and estradiol on in vitro maturation of sheep oocytes. *Theriogenology* **54** 209–218. ([https://doi.org/10.1016/s0093-691x\(00\)00342-3](https://doi.org/10.1016/s0093-691x(00)00342-3))
- Günther N, Betzel C & Weber W 1990 The secreted form of the epidermal growth factor receptor. Characterization and crystallization of the receptor-ligand complex. *Journal of Biological Chemistry* **265** 22082–22085. ([https://doi.org/10.1016/S0021-9258\(18\)45671-2](https://doi.org/10.1016/S0021-9258(18)45671-2))
- Harendra GG, Jayasekara RW & Dissanayake VH 2012 Haplotypes of heparin-binding epidermal-growth-factor-like growth factor gene are associated with pre-eclampsia. *Journal of Obstetrics and Gynaecology Research* **38** 239–246. (<https://doi.org/10.1111/j.1447-0756.2011.01700.x>)
- Hastie R, Brownfoot FC, Pritchard N, Hannan NJ, Cannon P, Nguyen V, Palmer K, Beard S, Tong S & Kaitu'u-Lino TJ 2019 EGFR (epidermal growth factor receptor) signaling and the mitochondria regulate sFlt-1 (soluble FMS-like tyrosine kinase-1) secretion. *Hypertension* **73** 659–670. (<https://doi.org/10.1161/HYPERTENSIONAHA.118.12300>)
- Huang JR, Tseng L, Bischof P & Jänne OA 1987 Regulation of prolactin production by progesterin, estrogen, and relaxin in human endometrial stromal cells. *Endocrinology* **121** 2011–2017. (<https://doi.org/10.1210/endo-121-6-2011>)
- Humphrey RG, Sonnenberg-Hirche C, Smith SD, Hu C, Barton A, Sadovsky Y & Nelson DM 2008 Epidermal growth factor abrogates hypoxia-induced apoptosis in cultured human trophoblasts through phosphorylation of BAD serine 112. *Endocrinology* **149** 2131–2137. (<https://doi.org/10.1210/en.2007-1253>)
- Huppertz B 2011 Trophoblast differentiation, fetal growth restriction and preeclampsia. *Pregnancy Hypertension* **1** 79–86. (<https://doi.org/10.1016/j.preghy.2010.10.003>)
- Ilekis JV, Stark BC & Scoccia B 1995 Possible role of variant RNA transcripts in the regulation of epidermal growth factor receptor expression in human placenta. *Molecular Reproduction and Development* **41** 149–156. (<https://doi.org/10.1002/mrd.1080410205>)
- Itoh Y, Joh T, Tanida S, Sasaki M, Kataoka H, Itoh K, Oshima T, Ogasawara N, Togawa S, Wada T, et al. 2005 IL-8 promotes cell proliferation and migration through metalloproteinase-cleavage proHB-EGF in human colon carcinoma cells. *Cytokine* **29** 275–282. (<https://doi.org/10.1016/j.cyto.2004.11.005>)
- Jessom P, Leach RE & Armant DR 2009 Diverse functions of HBEGF during pregnancy. *Molecular Reproduction and Development* **76** 1116–1127. (<https://doi.org/10.1002/mrd.21066>)
- Jia H, Ma X, Tong W, Doyran B, Sun Z, Wang L, Zhang X, Zhou Y, Badar F, Chandra A, et al. 2016 EGFR signaling is critical for maintaining the superficial layer of articular cartilage and preventing osteoarthritis initiation. *PNAS* **113** 14360–14365. (<https://doi.org/10.1073/pnas.1608938113>)
- Jokhi PP, King A & Loke YW 1994 Reciprocal expression of epidermal growth factor receptor (EGF-R) and c-erbB2 by non-invasive and invasive human trophoblast populations. *Cytokine* **6** 433–442. ([https://doi.org/10.1016/1043-4666\(94\)90068-x](https://doi.org/10.1016/1043-4666(94)90068-x))
- Jones S & Rappoport JZ 2014 Interdependent epidermal growth factor receptor signalling and trafficking. *International Journal of Biochemistry and Cell Biology* **51** 23–28. (<https://doi.org/10.1016/j.biocel.2014.03.014>)
- Jura N, Endres NF, Engel K, Deindl S, Das R, Lamers MH, Wemmer DE, Zhang X & Kuriyan J 2009 Mechanism for activation of the EGF receptor catalytic domain by the juxtamembrane segment. *Cell* **137** 1293–1307. (<https://doi.org/10.1016/j.cell.2009.04.025>)
- Kagiyama S, Eguchi S, Frank GD, Inagami T, Zhang YC & Phillips MI 2002 Angiotensin II-induced cardiac hypertrophy and hypertension are attenuated by epidermal growth factor receptor antisense. *Circulation* **106** 909–912. (<https://doi.org/10.1161/01.cir.0000030181.63741.56>)
- Kagiyama S, Qian K, Kagiyama T & Phillips MI 2003 Antisense to epidermal growth factor receptor prevents the development of left ventricular hypertrophy. *Hypertension* **41** 824–829. (<https://doi.org/10.1161/01.HYP.0000047104.42047.9B>)
- Kalluri R & LeBleu VS 2020 The biology, function, and biomedical applications of exosomes. *Science* **367** eaau6977. (<https://doi.org/10.1126/science.aau6977>)
- Kelly NJ, Radder JE, Baust JJ, Burton CL, Lai YC, Potoka KC, Agostini BA, Wood JP, Bachman TN, Vanderpool RR, et al. 2017 Mouse genome-wide association study of preclinical Group II pulmonary hypertension identifies epidermal growth factor receptor. *American Journal of Respiratory Cell and Molecular Biology* **56** 488–496. (<https://doi.org/10.1165/rcmb.2016-0176OC>)
- Kim J, Lee CK, Park HJ, Kim HJ, So HH, Lee KS, Lee HM, Roh HY, Choi WS, Park TK, et al. 2006 Epidermal growth factor induces vasoconstriction through the phosphatidylinositol 3-kinase-mediated mitogen-activated protein kinase pathway in hypertensive rats. *Journal of Pharmacological Sciences* **101** 135–143. (<https://doi.org/10.1254/jphs.fp0060021>)
- Kosovic I, Prusac IK, Berkovic A, Marusic J, Mimica M & Tomas SZ 2017 Expression of EGF, EGFR, and proliferation in placentas from pregnancies complicated with preeclampsia. *Hypertension in Pregnancy* **36** 16–20. (<https://doi.org/10.1080/10641955.2016.1218502>)
- Kupsamy K, Moodley J & Naicker T 2019 Hepatocyte growth factor and epidermal growth factor in HIV infected women with preeclampsia. *European Journal of Obstetrics, Gynecology, and Reproductive Biology* **240** 9–14. (<https://doi.org/10.1016/j.ejogrb.2019.05.036>)
- Kyriakakis E, Cavallari M, Pfaff D, Fabbro D, Mestan J, Philippova M, De Libero G, Erne P & Resink TJ 2011 IL-8-mediated angiogenic responses of endothelial cells to lipid antigen activation of iNKT cells depend on EGFR transactivation. *Journal of Leukocyte Biology* **90** 929–939. (<https://doi.org/10.1189/jlb.0211097>)
- Ladines-Llave CA, Maruo T, Manalo AS & Mochizuki M 1991 Cytologic localization of epidermal growth factor and its receptor in developing human placenta varies over the course of pregnancy. *American Journal of Obstetrics and Gynecology* **165** 1377–1382. ([https://doi.org/10.1016/0002-9378\(91\)90372-x](https://doi.org/10.1016/0002-9378(91)90372-x))
- Laird DW 2005 Connexin phosphorylation as a regulatory event linked to gap junction internalization and degradation. *Biochimica et Biophysica Acta* **1711** 172–182. (<https://doi.org/10.1016/j.bbmem.2004.09.009>)
- LaMarca BD, Ryan MJ, Gilbert JS, Murphy SR & Granger JP 2007 Inflammatory cytokines in the pathophysiology of hypertension during preeclampsia. *Current Hypertension Reports* **9** 480–485. (<https://doi.org/10.1007/s11906-007-0088-1>)
- Large MJ, Wetendorf M, Lanz RB, Hartig SM, Creighton CJ, Mancini MA, Kovanci E, Lee KF, Threadgill DW, Lydon JP, et al. 2014 The epidermal growth factor receptor critically regulates endometrial function during early pregnancy. *PLoS Genetics* **10** e1004451. (<https://doi.org/10.1371/journal.pgen.1004451>)
- Lau AF, Kanemitsu MY, Kurata WE, Danesh S & Boynton AL 1992 Epidermal growth factor disrupts gap-junctional communication and induces phosphorylation of connexin43 on serine. *Molecular Biology of the Cell* **3** 865–874. (<https://doi.org/10.1091/mbc.3.8.865>)
- Lau SY, Guild SJ, Barrett CJ, Chen Q, McCowan L, Jordan V & Chamley LW 2013 Tumor necrosis factor-alpha, interleukin-6, and interleukin-10 levels are altered in preeclampsia: a systematic review and meta-analysis. *American Journal of Reproductive Immunology* **70** 412–427. (<https://doi.org/10.1111/aji.12138>)
- Leach RE, Khalifa R, Ramirez ND, Das SK, Wang J, Dey SK, Romero R & Armant DR 1999 Multiple roles for heparin-binding epidermal growth factor-like growth factor are suggested by its cell-specific expression during the human endometrial cycle and early placentation. *Journal of Clinical Endocrinology and Metabolism* **84** 3355–3363. (<https://doi.org/10.1210/jcem.84.9.5980>)

- Leavey K, Bainbridge SA & Cox BJ 2015 Large scale aggregate microarray analysis reveals three distinct molecular subclasses of human preeclampsia. *PLoS ONE* **10** e0116508. (<https://doi.org/10.1371/journal.pone.0116508>)
- Lee G & Tubby J 2015 Preeclampsia and the risk of cardiovascular disease later in life – a review of the evidence. *Midwifery* **31** 1127–1134. (<https://doi.org/10.1016/j.midw.2015.09.005>)
- Lee KY, Jeong JW, Wang J, Ma L, Martin JF, Tsai SY, Lydon JP & DeMayo JF 2007 Bmp2 is critical for the murine uterine decidual response. *Molecular and Cellular Biology* **27** 5468–5478. (<https://doi.org/10.1128/MCB.00342-07>)
- Lee SM, Romero R, Lee YJ, Park IS, Park CW & Yoon BH 2012 Systemic inflammatory stimulation by microparticles derived from hypoxic trophoblast as a model for inflammatory response in preeclampsia. *American Journal of Obstetrics and Gynecology* **207** 337.e1–337.e8. (<https://doi.org/10.1016/j.ajog.2012.06.047>)
- Lindner V, Majack RA & Reidy MA 1990 Basic fibroblast growth factor stimulates endothelial regrowth and proliferation in denuded arteries. *Journal of Clinical Investigation* **85** 2004–2008. (<https://doi.org/10.1172/JCI114665>)
- Lindqvist P, Grenner L & Marsál K 1999 Epidermal growth factor in maternal urine – a predictor of intrauterine growth restriction? *Early Human Development* **56** 143–150. ([https://doi.org/10.1016/s0378-3782\(99\)00037-7](https://doi.org/10.1016/s0378-3782(99)00037-7))
- Liu Q, Zhang J, Gao H, Yuan T, Kang J, Jin L, Gui S & Zhang Y 2018 Role of EGFL7/EGFR-signaling pathway in migration and invasion of growth hormone-producing pituitary adenomas. *Science China: Life Sciences* **61** 893–901. (<https://doi.org/10.1007/s11427-018-9320-4>)
- Loneragan P, Carolan C, Van Langendonck A, Donnay I, Khatir H & Mermillod P 1996 Role of epidermal growth factor in bovine oocyte maturation and preimplantation embryo development in vitro. *Biology of Reproduction* **54** 1420–1429. (<https://doi.org/10.1095/biolreprod54.6.1420>)
- Luo BH, Xiong F, Wang JP, Li JH, Zhong M, Liu QL, Luo GQ, Yang XJ, Xiao N, Xie B, et al. 2014 Epidermal growth factor-like domain-containing protein 7 (EGFL7) enhances EGF receptor-AKT signaling, epithelial-mesenchymal transition, and metastasis of gastric cancer cells. *PLoS ONE* **9** e99922. (<https://doi.org/10.1371/journal.pone.0099922>)
- Lysiak JJ, Han VK & Lala PK 1993 Localization of transforming growth factor alpha in the human placenta and decidua: role in trophoblast growth. *Biology of Reproduction* **49** 885–894. (<https://doi.org/10.1095/biolreprod49.5.885>)
- Lysiak JJ, Johnson GR & Lala PK 1995 Localization of amphiregulin in the human placenta and decidua throughout gestation: role in trophoblast growth. *Placenta* **16** 359–366. ([https://doi.org/10.1016/0143-4004\(95\)90093-4](https://doi.org/10.1016/0143-4004(95)90093-4))
- Madhukar BV, Oh SY, Chang CC, Wade M & Trosko JE 1989 Altered regulation of intercellular communication by epidermal growth factor, transforming growth factor-beta and peptide hormones in normal human keratinocytes. *Carcinogenesis* **10** 13–20. (<https://doi.org/10.1093/carcin/10.1.13>)
- Maduray K, Moodley J & Mackraj I 2020 The impact of circulating exosomes derived from early and late onset preeclamptic pregnancies on inflammatory cytokine secretion by BeWo cells. *European Journal of Obstetrics, Gynecology, and Reproductive Biology* **247** 156–162. (<https://doi.org/10.1016/j.ejogrb.2020.02.032>)
- Magid M, Nanney LB, Stoscheck CM & King LE 1985 Epidermal growth factor binding and receptor distribution in term human placenta. *Placenta* **6** 519–526. ([https://doi.org/10.1016/s0143-4004\(85\)80005-9](https://doi.org/10.1016/s0143-4004(85)80005-9))
- Maruo T, Matsuo H, Murata K & Mochizuki M 1992 Gestational age-dependent dual action of epidermal growth factor on human placenta early in gestation. *Journal of Clinical Endocrinology and Metabolism* **75** 1362–1367. (<https://doi.org/10.1210/jcem.75.5.1430098>)
- Massimiani M, Lacko LA, Burke Swanson CS, Salvi S, Argueta LB, Moresi S, Ferrazzani S, Gelber SE, Baergen RN, Toschi N, et al. 2019 Increased circulating levels of epidermal growth factor-like domain 7 in pregnant women affected by preeclampsia. *Translational Research* **207** 19–29. (<https://doi.org/10.1016/j.trsl.2018.12.004>)
- Mehta VB & Besner GE 2007 HB-EGF promotes angiogenesis in endothelial cells via PI3-kinase and MAPK signaling pathways. *Growth Factors* **25** 253–263. (<https://doi.org/10.1080/08977190701773070>)
- Mehta VB, Zhou Y, Radulescu A & Besner GE 2008 HB-EGF stimulates eNOS expression and nitric oxide production and promotes eNOS dependent angiogenesis. *Growth Factors* **26** 301–315. (<https://doi.org/10.1080/08977190802393596>)
- Moll SJ, Jones CJ, Crocker IP, Baker PN & Heazell AE 2007 Epidermal growth factor rescues trophoblast apoptosis induced by reactive oxygen species. *Apoptosis* **12** 1611–1622. (<https://doi.org/10.1007/s10495-007-0092-6>)
- Moreno AP 2005 Connexin phosphorylation as a regulatory event linked to channel gating. *Biochimica et Biophysica Acta* **1711** 164–171. (<https://doi.org/10.1016/j.bbame.2005.02.016>)
- Morrish DW, Bhardwaj D, Dabbagh LK, Marusyk H & Siy O 1987 Epidermal growth factor induces differentiation and secretion of human chorionic gonadotropin and placental lactogen in normal human placenta. *Journal of Clinical Endocrinology and Metabolism* **65** 1282–1290. (<https://doi.org/10.1210/jcem-65-6-1282>)
- Moslehi R, Mills JL, Signore C, Kumar A, Ambroggio X & Dzutsev A 2013 Integrative transcriptome analysis reveals dysregulation of canonical cancer molecular pathways in placenta leading to preeclampsia. *Scientific Reports* **3** 2407. (<https://doi.org/10.1038/srep02407>)
- Normanno N, De Luca A, Bianco C, Strizzi L, Mancino M, Maiello MR, Carotenuto A, De Feo G, Caponigro F & Salomon DS 2006 Epidermal growth factor receptor (EGFR) signaling in cancer. *Gene* **366** 2–16. (<https://doi.org/10.1016/j.gene.2005.10.018>)
- Oh SY, Schmidt SA & Murray AW 1993 Epidermal growth factor inhibits gap junctional communication and stimulates serine-phosphorylation of connexin43 in WB cells by a protein kinase C-independent mechanism. *Cell Adhesion and Communication* **1** 143–149. (<https://doi.org/10.3109/15419069309095690>)
- Perkins J, St John J & Ahmed A 2002 Modulation of trophoblast cell death by oxygen and EGF. *Molecular Medicine* **8** 847–856. (<https://doi.org/10.1007/BF03402090>)
- Pillay P, Maharaj N, Moodley J & Mackraj I 2016 Placental exosomes and pre-eclampsia: maternal circulating levels in normal pregnancies and, early and late onset preeclamptic pregnancies. *Placenta* **46** 18–25. (<https://doi.org/10.1016/j.placenta.2016.08.078>)
- Purba ER, Saita EI & Maruyama IN 2017 Activation of the EGF receptor by ligand binding and oncogenic mutations: the ‘rotation model’. *Cells* **6** 13. (<https://doi.org/10.3390/cells6020013>)
- Raab G, Kover K, Paria BC, Dey SK, Ezzell RM & Klagsbrun M 1996 Mouse preimplantation blastocysts adhere to cells expressing the transmembrane form of heparin-binding EGF-like growth factor. *Development* **122** 637–645. (<https://doi.org/10.1242/dev.122.2.637>)
- Ramani N, Chegini N, Rao CV, Woost PG & Schultz GS 1986 The presence of epidermal growth factor binding sites in the intracellular organelles of term human placenta. *Journal of Cell Science* **84** 19–40. (<https://doi.org/10.1242/jcs.84.1.19>)
- Ramteke A, Ting H, Agarwal C, Mateen S, Somasagara R, Hussain A, Graner M, Frederick B, Agarwal R & Deep G 2015 Exosomes secreted under hypoxia enhance invasiveness and stemness of prostate cancer cells by targeting adherens junction molecules. *Molecular Carcinogenesis* **54** 554–565. (<https://doi.org/10.1002/mc.22124>)
- Rao CV, Ramani N, Chegini N, Stadig BK, Carman FR, Woost PG, Schultz GS & Cook CL 1985 Topography of human placental receptors for epidermal growth factor. *Journal of Biological Chemistry* **260** 1705–1710. ([https://doi.org/10.1016/S0021-9258\(18\)89651-X](https://doi.org/10.1016/S0021-9258(18)89651-X))
- Reiter J & Maihle NJ 2003 Characterization and expression of novel 60-kDa and 110-kDa EGFR isoforms in human placenta. *Annals of the New York Academy of Sciences* **995** 39–47. (<https://doi.org/10.1111/j.1749-6632.2003.tb03208.x>)

- Sabapatha A, Gercel-Taylor C & Taylor DD 2006 Specific isolation of placenta-derived exosomes from the circulation of pregnant women and their immunoregulatory consequences. *American Journal of Reproductive Immunology* **56** 345–355. (<https://doi.org/10.1111/j.1600-0897.2006.00435.x>)
- Salomon C, Kobayashi M, Ashman K, Sobrevia L, Mitchell MD & Rice GE 2013 Hypoxia-induced changes in the bioactivity of cytotrophoblast-derived exosomes. *PLoS ONE* **8** e79636. (<https://doi.org/10.1371/journal.pone.0079636>)
- Salomon C, Torres MJ, Kobayashi M, Scholz-Romero K, Sobrevia L, Dobierzewska A, Illanes SE, Mitchell MD & Rice GE 2014 A gestational profile of placental exosomes in maternal plasma and their effects on endothelial cell migration. *PLoS ONE* **9** e98667. (<https://doi.org/10.1371/journal.pone.0098667>)
- Sambhi MP, Swaminathan N, Wang H & Rong H 1992 Increased EGF binding and EGFR messenger-RNA expression in rat aorta with chronic administration of pressor angiotensin-II. *Biochemical Medicine and Metabolic Biology* **48** 8–18. ([https://doi.org/10.1016/0885-4505\(92\)90042-w](https://doi.org/10.1016/0885-4505(92)90042-w))
- Sarker S, Scholz-Romero K, Perez A, Illanes SE, Mitchell MD, Rice GE & Salomon C 2014 Placenta-derived exosomes continuously increase in maternal circulation over the first trimester of pregnancy. *Journal of Translational Medicine* **12** 204. (<https://doi.org/10.1186/1479-5876-12-204>)
- Schraufstatter IU, Trieu K, Zhao M, Rose DM, Terkeltaub RA & Burger M 2003 IL-8-mediated cell migration in endothelial cells depends on cathepsin B activity and transactivation of the epidermal growth factor receptor. *Journal of Immunology* **171** 6714–6722. (<https://doi.org/10.4049/jimmunol.171.12.6714>)
- Shan Y, Eastwood MP, Zhang X, Kim ET, Arkhipov A, Dror RO, Jumper J, Kuriyan J & Shaw DE 2012 Oncogenic mutations counteract intrinsic disorder in the EGFR kinase and promote receptor dimerization. *Cell* **149** 860–870. (<https://doi.org/10.1016/j.cell.2012.02.063>)
- Shomer E, Katzenell S, Zipori Y, Sammour RN, Isermann B, Brenner B & Aharon A 2013 Microvesicles of women with gestational hypertension and preeclampsia affect human trophoblast fate and endothelial function. *Hypertension* **62** 893–898. (<https://doi.org/10.1161/HYPERTENSIONAHA.113.01494>)
- Sibilia M & Wagner EF 1995 Strain-dependent epithelial defects in mice lacking the EGF receptor. *Science* **269** 234–238. (<https://doi.org/10.1126/science.7618085>)
- Stirnweiss J, Valkova C, Ziesché E, Drube S & Liebmann C 2006 Muscarinic M2 receptors mediate transactivation of EGF receptor through Fyn kinase and without matrix metalloproteases. *Cellular Signalling* **18** 1338–1349. (<https://doi.org/10.1016/j.cellsig.2005.10.018>)
- Tanida S, Joh T, Itoh K, Kataoka H, Sasaki M, Ohara H, Nakazawa T, Nomura T, Kinugasa Y, Ohmoto H, et al. 2004 The mechanism of cleavage of EGFR ligands induced by inflammatory cytokines in gastric cancer cells. *Gastroenterology* **127** 559–569. (<https://doi.org/10.1053/j.gastro.2004.05.017>)
- Tanimura K, Nakago S, Murakoshi H, Takekida S, Moriyama T, Matsuo H, Hashimoto K & Maruo T 2004 Changes in the expression and cytoplasmic localization of betacellulin and its receptors (ErbB-1 and ErbB-4) in the trophoblasts in human placenta over the course of pregnancy. *European Journal of Endocrinology* **151** 93–101. (<https://doi.org/10.1530/eje.0.1510093>)
- Tannetta D, Collett G, Vathish M, Redman C & Sargent I 2017 Syncytiotrophoblast extracellular vesicles – circulating biopsies reflecting placental health. *Placenta* **52** 134–138. (<https://doi.org/10.1016/j.placenta.2016.11.008>)
- Threadgill DW, Dlugosz AA, Hansen LA, Tennenbaum T, Licht U, Yee D, LaMantia C, Mourtou T, Herrup K & Harris RC 1995 Targeted disruption of mouse EGF receptor: effect of genetic background on mutant phenotype. *Science* **269** 230–234. (<https://doi.org/10.1126/science.7618084>)
- Uhlén M, Fagerberg L, Hallström BM, Lindskog C, Oksvold P, Mardinoglu A, Sivertsson Å, Kampf C, Sjöstedt E, Asplund A, et al. 2015 Proteomics. Tissue-based map of the human proteome. *Science* **347** 1260419. (<https://doi.org/10.1126/science.1260419>)
- Usuba R, Pauty J, Soncin F & Matsunaga YT 2019 EGFL7 regulates sprouting angiogenesis and endothelial integrity in a human blood vessel model. *Biomaterials* **197** 305–316. (<https://doi.org/10.1016/j.biomaterials.2019.01.022>)
- Vanwijk MJ, Svedas E, Boer K, Nieuwland R, Vanbavel E & Kublickiene KR 2002 Isolated microparticles, but not whole plasma, from women with preeclampsia impair endothelium-dependent relaxation in isolated myometrial arteries from healthy pregnant women. *American Journal of Obstetrics and Gynecology* **187** 1686–1693. (<https://doi.org/10.1067/mob.2002.127905>)
- Wang FY, Kang CS, Wang-Gou SY, Huang CH, Feng CY & Li XJ 2017 EGFL7 is an intercellular EGFR signal messenger that plays an oncogenic role in glioma. *Cancer Letters* **384** 9–18. (<https://doi.org/10.1016/j.canlet.2016.10.009>)
- Watson AJ, De Sousa P, Caveney A, Barcroft LC, Natale D, Urquhart J & Westhusin ME 2000 Impact of bovine oocyte maturation media on oocyte transcript levels, blastocyst development, cell number, and apoptosis. *Biology of Reproduction* **62** 355–364. (<https://doi.org/10.1095/biolreprod62.2.355>)
- Wee P & Wang Z 2017 Epidermal growth factor receptor cell proliferation signaling pathways. *Cancers* **9** 52. (<https://doi.org/10.3390/cancers9050052>)
- Wei Z, Park KW, Day BN & Prather RS 2001 Effect of epidermal growth factor on preimplantation development and its receptor expression in porcine embryos. *Molecular Reproduction and Development* **60** 457–462. (<https://doi.org/10.1002/mrd.1110>)
- Whigham CA, MacDonald TM, Walker SP, Hannan NJ, Tong S & Kaitu'u-Lino TJ 2019 The untapped potential of placenta-enriched molecules for diagnostic and therapeutic development. *Placenta* **84** 28–31. (<https://doi.org/10.1016/j.placenta.2019.02.002>)
- Whitehead CL, Kaitu'u-Lino TJ, Binder NK, Beard S, De Alwis N, Brownfoot F, Tong S & Hannan NJ 2018 EGFL7 gene expression is regulated by hypoxia in trophoblast and altered in the plasma of patients with early preeclampsia. *Pregnancy Hypertension* **14** 115–120. (<https://doi.org/10.1016/j.preghy.2018.09.001>)
- Widgerow AD 2012 2012 cellular resolution of inflammation – catabasis. *Wound Repair and Regeneration* **20** 2–7. (<https://doi.org/10.1111/j.1524-475X.2011.00754.x>)
- Wilson KJ, Gilmore JL, Foley J, Lemmon MA & Riese DJ 2009 Functional selectivity of EGF family peptide growth factors: implications for cancer. *Pharmacology and Therapeutics* **122** 1–8. (<https://doi.org/10.1016/j.pharmthera.2008.11.008>)
- Wu S, Luo M, To KKW, Zhang J, Su C, Zhang H, An S, Wang F, Chen D & Fu L 2021 Intercellular transfer of exosomal wild type EGFR triggers osimertinib resistance in non-small cell lung cancer. *Molecular Cancer* **20** 17. (<https://doi.org/10.1186/s12943-021-01307-9>)
- Yamashita H, Yano Y, Kawano K & Matsuzaki K 2015 Oligomerization-function relationship of EGFR on living cells detected by the coiled-coil labeling and FRET microscopy. *Biochimica et Biophysica Acta* **1848** 1359–1366. (<https://doi.org/10.1016/j.bbamem.2015.03.004>)
- Yi FX, Boeldt DS, Gifford SM, Sullivan JA, Grummer MA, Magness RR & Bird IM 2010 Pregnancy enhances sustained Ca²⁺ bursts and endothelial nitric oxide synthase activation in ovine uterine artery endothelial cells through increased connexin 43 function. *Biology of Reproduction* **82** 66–75. (<https://doi.org/10.1095/biolreprod.109.078253>)
- Yi FX, Boeldt DS, Magness RR & Bird IM 2011 [Ca²⁺]_i signaling vs. eNOS expression as determinants of NO output in uterine artery endothelium: relative roles in pregnancy adaptation and reversal by VEGF165. *American Journal of Physiology: Heart and Circulatory Physiology* **300** H1182–H1193. (<https://doi.org/10.1152/ajpheart.01108.2010>)

- Ying WZ & Sanders PW 2005 Enhanced expression of EGF receptor in a model of salt-sensitive hypertension. *American Journal of Physiology: Renal Physiology* **289** F314–F321. (<https://doi.org/10.1152/ajprenal.00003.2005>)
- Yoo HJ, Barlow DH & Mardon HJ 1997 Temporal and spatial regulation of expression of heparin-binding epidermal growth factor-like growth factor in the human endometrium: a possible role in blastocyst implantation. *Developmental Genetics* **21** 102–108. ([https://doi.org/10.1002/\(SICI\)1520-6408\(1997\)21:1<102::AID-DVG12>3.0.CO;2-C](https://doi.org/10.1002/(SICI)1520-6408(1997)21:1<102::AID-DVG12>3.0.CO;2-C))
- Zhang X, Gureasko J, Shen K, Cole PA & Kuriyan J 2006 An allosteric mechanism for activation of the kinase domain of epidermal growth factor receptor. *Cell* **125** 1137–1149. (<https://doi.org/10.1016/j.cell.2006.05.013>)
- Zhang H, Deng T, Liu R, Bai M, Zhou L, Wang X, Li S, Wang X, Yang H, Li J, *et al.* 2017 Exosome-delivered EGFR regulates liver microenvironment to promote gastric cancer liver metastasis. *Nature Communications* **8** 15016. (<https://doi.org/10.1038/ncomms15016>)

Received in final form 28 September 2022

Accepted 5 October 2022

Accepted Manuscript published online 5 October 2022